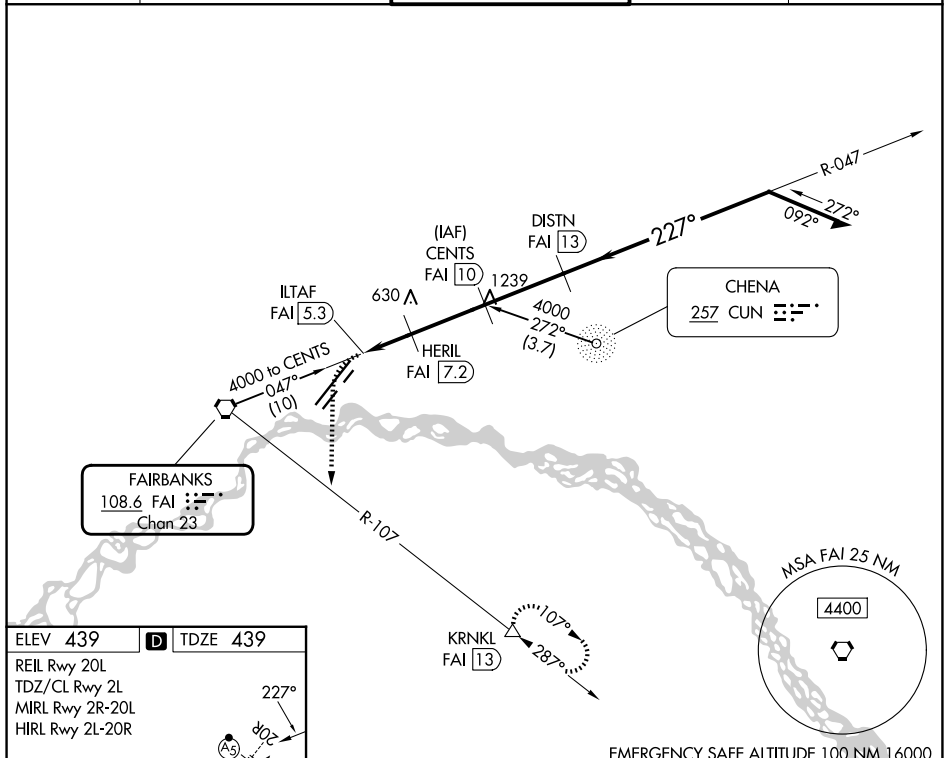


TACAN RWY 20R  
FAIRBANKS INTL (FAI) (PAFA)

MALSR

**MISSED APPROACH:** Climbing left turn to 4000 on heading 160° and FAI VORTAC R-107 to KRNL/FAI 13 DME and hold, continue climb-in-hold to 4000.

ATIS 124.4	FAIRBANKS APP CON 125.35 363.2	FAIRBANKS TOWER 118.3 257.8	GND CON 121.9	CLNC DEL 127.6
---------------	-----------------------------------	--------------------------------	------------------	-------------------

[illegible]

EMERGENCY SAFE ALTITUDE 100 NM 16000					
4000 hdg 160°	FAI R-107	KRNL △	CENTS FAI 10 VGS1 and descent angles not coincident (VGS1 Angle 3.00/TCH 74).		
ILTAF FAI 5.3 HERIL FAI 7.2 3.00° TCH 60			DISTN FAI 13 047° 227° 4000 Remain within 1.5 NM		
1300 2200 3300					
0.7	1.8 NM	2.8 NM	3 NM		
CATEGORY	A	B	C	D	E
S-20R	880/55	441 (500-1)	880-1 <sup>3</sup> / <sub>8</sub>	441 (500-1 <sup>3</sup> / <sub>8</sub> )	1000-1 <sup>5</sup> / <sub>8</sub> 561 (600-1 <sup>5</sup> / <sub>8</sub> )
CIRCLING	880-1 441 (500-1)	900-1 461 (500-1)	900-1 <sup>1</sup> / <sub>2</sub> 461 (500-1 <sup>1</sup> / <sub>2</sub> )	1020-2 581 (600-2)	1120-2 <sup>1</sup> / <sub>2</sub> 681 (700-2 <sup>1</sup> / <sub>2</sub> )