

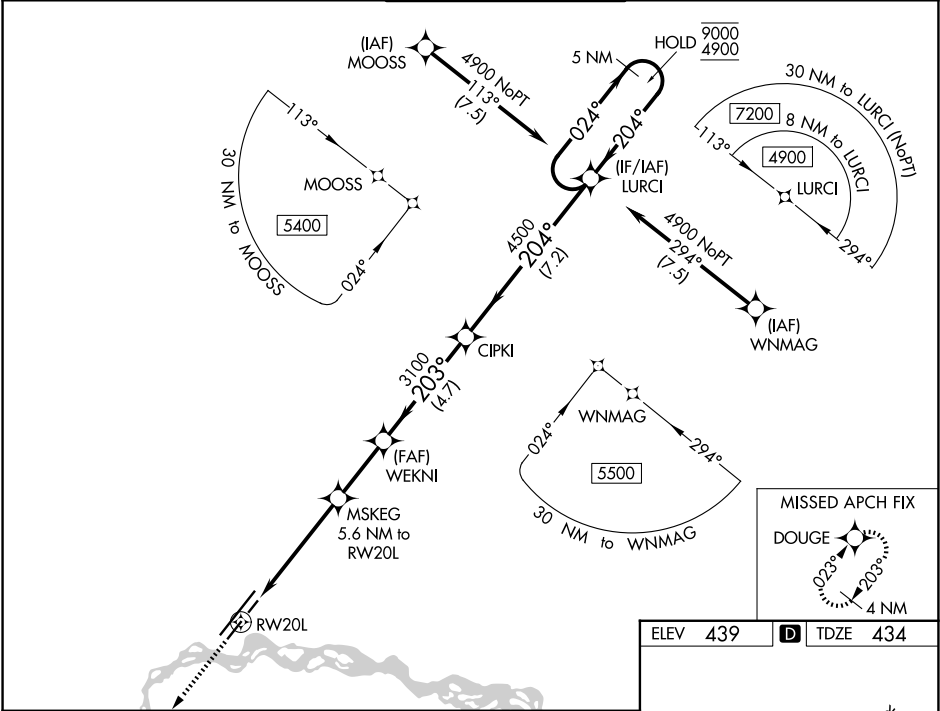
WAAS CH <b>93812</b> <b>W20A</b>	APP CRS <b>203°</b>	Rwy Ldg TDZE Apt Elev	<b>4510</b> <b>434</b> <b>439</b>
--	------------------------	-----------------------------	---


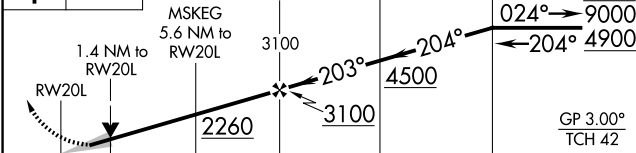
RNAV (GPS) RWY 20L

FAIRBANKS INTL (FAI) (PAFA)

RNP APCH-GPS.	MISSED APPROACH: Climb to 3700 direct DOUGE and hold, continue climb-in-hold to 3700.
<div><div>▼</div><div>29°C</div></div> <div>Circling NA west of Rwy 2L-20R. For uncompensated Baro-VNAV systems, LNAV/VNAV NA below -20°C or above 54°C. Circling NA to Rwys 2W/20W and 2/20.</div>	

ATIS <b>124.4</b>	FAIRBANKS APP CON <b>125.35 363.2</b>	FAIRBANKS TOWER <b>118.3 257.8</b>	GND CON <b>121.9</b>	CLNC DEL <b>127.6</b>
----------------------	--	---------------------------------------	-------------------------	--------------------------



3700 ↑	DOUGE 					LURCI 5 NM Holding Pattern
						
CATEGORY	A		B		C	D
LPV DA	684- <sup>3</sup> / <sub>4</sub> 250 (300- <sup>3</sup> / <sub>4</sub> )					
LNAV/ VNAV DA	701- <sup>7</sup> / <sub>8</sub> 267 (300- <sup>7</sup> / <sub>8</sub> )					
LNAV MDA	920-1 486 (500-1)		920-1 <sup>3</sup> / <sub>8</sub> 486 (500-1 <sup>3</sup> / <sub>8</sub> )			
CIRCLING	920-1 481 (500-1)		920-1 <sup>1</sup> / <sub>2</sub> 481 (500-1 <sup>1</sup> / <sub>2</sub> )		1000-2 561 (600-2)	

