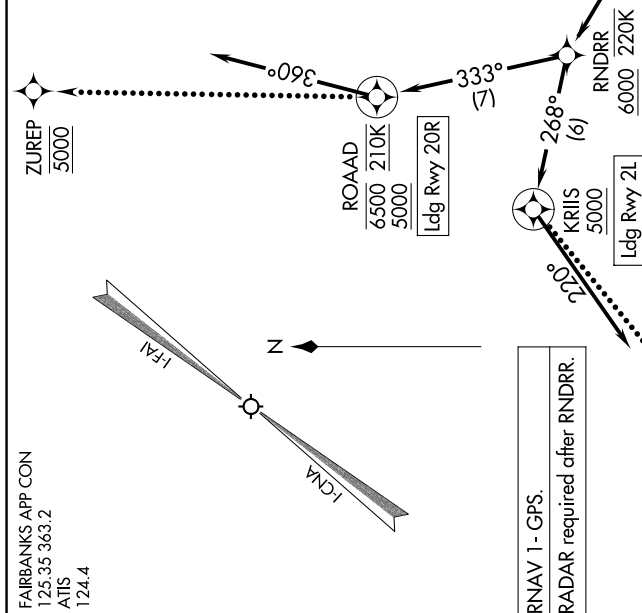


AK, 07 AUG 2025 to 02 OCT 2025

FAIRBANKS APP CON  
125.35 363.2  
ATIS  
124.4



## ARRIVAL ROUTE DESCRIPTION

From RDFLG on track 291° to HRDNG, then on track 287° to cross  
RNDRR at or above 6000 and at or below 220K.

**LANDING RUNWAY 2L:** From RNDRR on track 268° to cross KRIIS at or above 5000, then on track 220°. Expect assigned instrument approach procedure or RADAR vectors to final approach course.

LANDING RUNWAY 20R: From RNDRR on track 333° to cross ROAAD between 5000 and 6500 and at 210K, then on track 360°. Expect assigned instrument approach procedure or RADAR vectors to final approach course.

## LOST COMMUNICATIONS

**RUNWAY 2L:** After KRIS, proceed on the RNAV (RNP) Z RWY 2L

APPROACH RUNWAY 20R: After ROAAD, proceed on the RNAV (RNP) Z RWY 20 approach. If unable, proceed to GLOW'S for the ILS RWY 2L approach.

RNAV 1 - GPS.	
RADAR required	

NOTE: Monitor ATIS for Rwy in use.

NOTE: Expect runway assignment from Fairbanks Approach upon initial contact.

NOTE: Chart not to scale.

RDFLG  
12000

Expect  $\overline{17000}$   
when DELTA ATCAA  
is active.

AK, 07 AUG 2025 to 02 OCT 2025

HRDNG FOUR ARRIVAL (RNAV)

(RDFLG.HRDNG4) 05OCT23

FAIRBANKS, ALASKA

FAIRBANKS INTL (FAI)(PAFA)