

**TOP ALTITUDE:
ASSIGNED BY ATC**

DEPARTURE ROUTE DESCRIPTION

TAKEOFF RUNWAYS 2L/R: Climb on heading 038° to 2200,
then left turn direct FAI VORTAC, thence ...
TAKEOFF RUNWAYS 20L/R: Climb on heading 203° to 2000,
then right turn heading 277°, thence ...

... intercept FAI R-242 to ENN R-255, then on ENN R-255 and GAL R-077 to GAL VOR/DME, then continue climb on assigned route and altitude.

FAIRBANKS DEP CON
125.35 363.2

DME required.

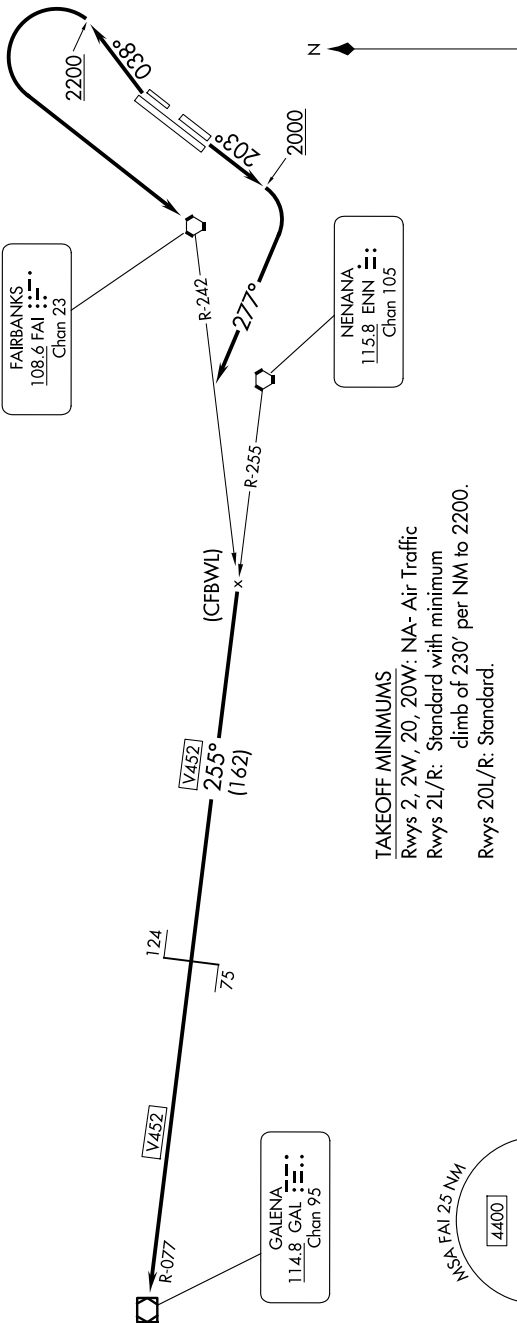
FAIRBANKS
108.6 FAI
Chan 23

NENANA
115.8 ENN $\ddot{::}$
Chan 105

GALENA
114.8 GAL : 114.8
Chan 95

WSA FAI 25 NM

TAKEOFF MINIMUMS
 Rwy 2, 2W, 20, 20W: NA- Air Traffic
 Rwy 2L/R: Standard with minimum
 climb of 230' per NM to 2200.
 Rwy 20L/R: Standard.



GALENA EIGHT DEPARTURE

(GLEEN8.GLEEN) 10AUG23

FAIRBANKS, ALASKA
FAIRBANKS INTL (FAI) (PAFA)

FAIRBANKS, ALASKA