

WAAS CH 45927 W28A	APP CRS 279°	Rwy Idg TDZE 25 Apt Elev 41
--	------------------------	---

RNAV (GPS) RWY 28

NOME (OME)(PAOM)

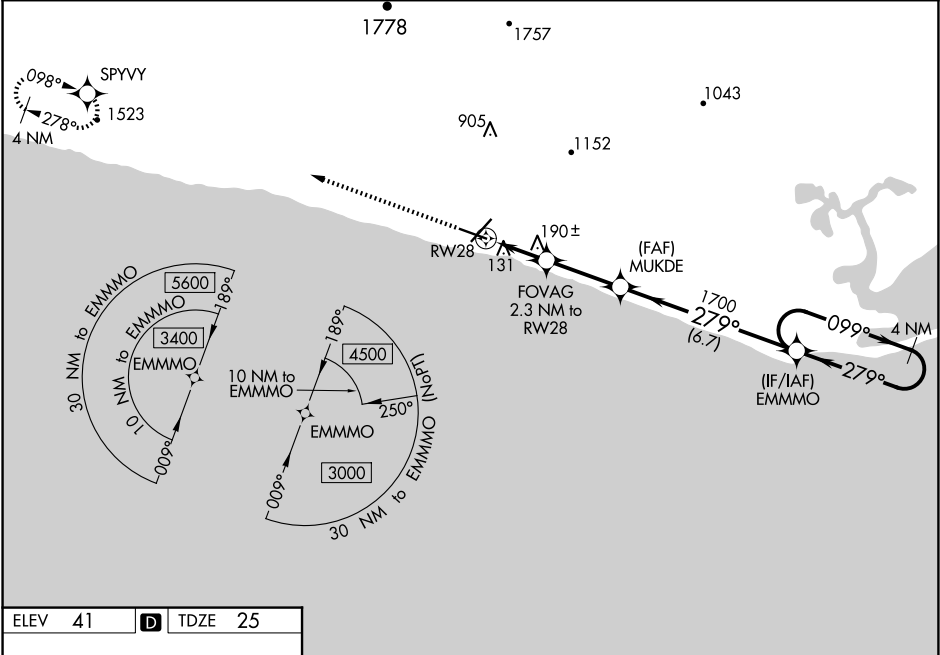
RNP APCH - GPS.

Inop table does not apply to LPV 28 all Cats. For uncompensated Baro-VNAV systems, LNAV/VNAV NA below -18°C or above 54°C. Circling NA for Cats C and D north of Rwy 10-28. NA. Rwy 28 helicopter visibility reduction below 4000 NA. Circling Rwy 21 NA at night.

MALSR

MISSED APPROACH: Climb to 3700 direct SPYVY and hold, continue climb-in-hold to 3700.

AFIS 119.925	ANCHORAGE CENTER 133.3 290.4	NOME RADIO 123.6 (CTAF) 1
------------------------	--	-------------------------------------



ELEV 41

D

TDZE 25

REIL Rwy 3 and 10 1
HIRL Rwy 10-28 1
MIRL Rwy 3-21 1

3700	SPYVY	FOVAG 2.3 NM to RW28	MUKDE 1700	EMMMO 4 NM Holding Pattern	3000	GP 3.00° TCH 51
1.2 NM	1.1 NM	2.8 NM	6.7 NM			
CATEGORY	A	B	C	D		
LPV	DA	275/40	250 (300-¾)			
LNAV/ VNAV	DA	301/40	276 (300-¾)			
LNAV	MDA	440/40	415 (400-¾)			
CIRCLING	540-1	499 (500-1)	540-1½ 499 (500-1½)	700-2 659 (700-2)		

AK, 07 AUG 2025 to 02 OCT 2025

AK, 07 AUG 2025 to 02 OCT 2025