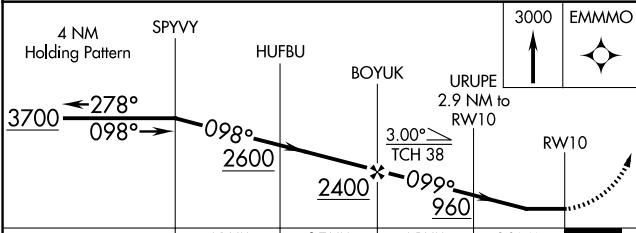
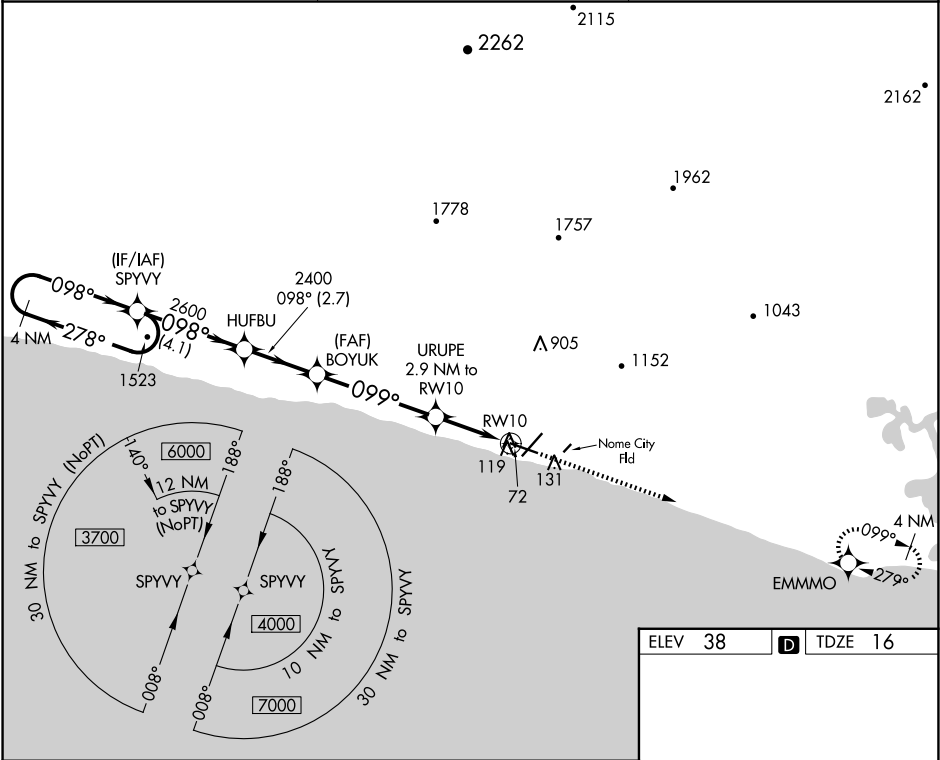


WAAS CH 40434 W10A	APP CRS 099°	Rwy Idg 6009 TDZE 16 Apt Elev 38
--	------------------------	---

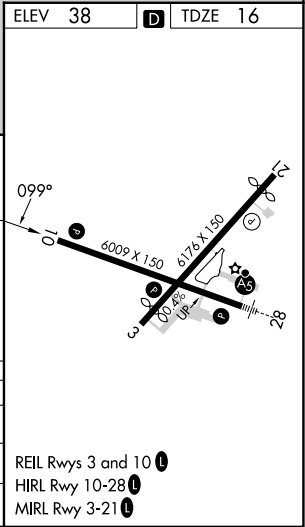
RNAV (GPS) RWY 10
NOME (OME)(PAOM)

7 DME/DME RNP-0.3 NA. Helicopter visibility reduction below 1 SM NA. Night Landing: Rwy 21 NA, Rwy 10 operational VGSI required, remain on or above VGSI glidepath until threshold. Circling NA for Cats C and D north of Rwy 10-28.	MISSED APPROACH: Climb to 3000 direct EMMMO and hold.
---	---

AFIS 119.925	ANCHORAGE CENTER 133.3 290.4	NOME RADIO 123.6 (CTAF) 0
------------------------	--	-------------------------------------



CATEGORY	A	B	C	D
LP MDA	340-1	324 (400-1)		
LNAV MDA	380-1	364 (400-1)		
C CIRCLING	540-1 502 (600-1)	540-1½ 502 (600-1½)	700-2 662 (700-2)	



AK, 07 AUG 2025 to 02 OCT 2025

AK, 07 AUG 2025 to 02 OCT 2025