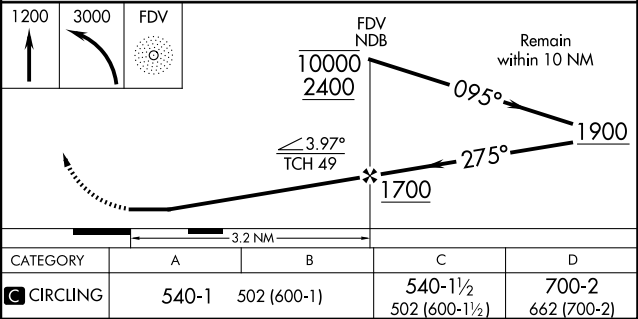
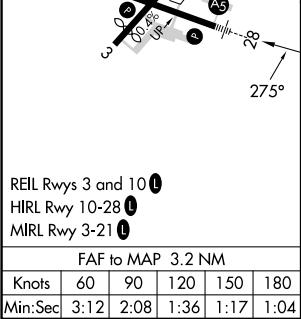
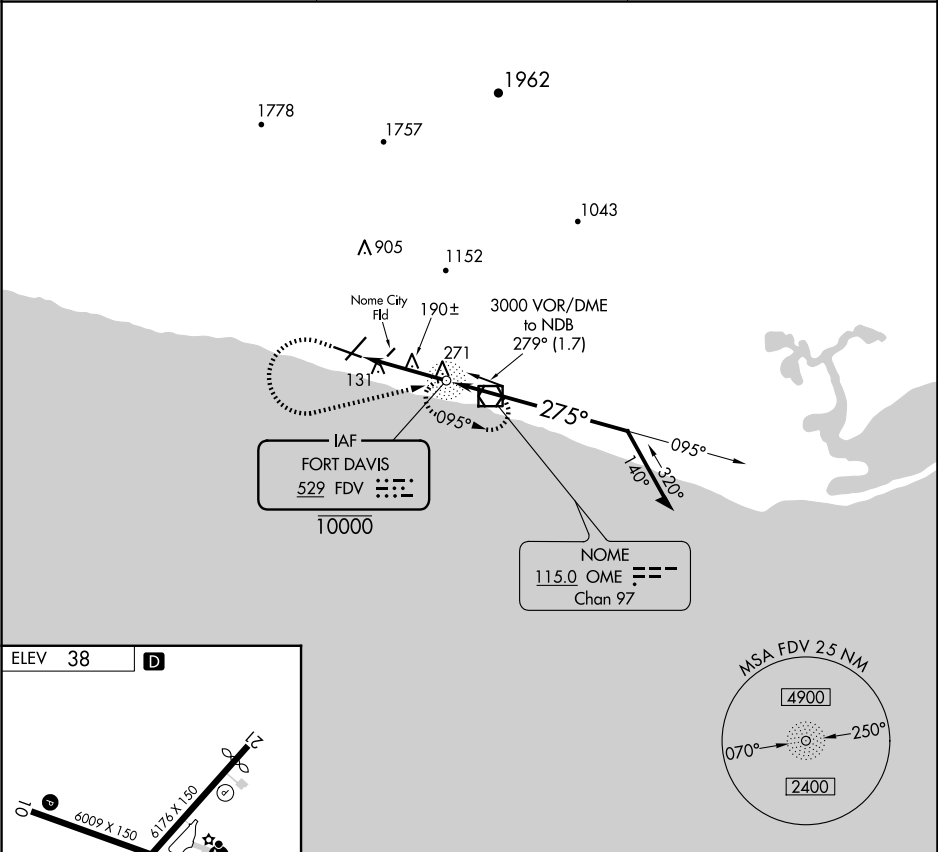


NDB FDV 529	APP CRS 275°	Rwy Idg TDZE Apt Elev	N/A N/A 38	NDB-A NOME (OME)(PAOM)
----------------	-----------------	-----------------------------	------------------	---------------------------

<div><div>▼</div><div>Circling NA for Cats C and D north of Rwy 10-28. Helicopter visibility reduction below 1 SM NA. Night Landing: Rwy 21, NA.</div></div>	MISSED APPROACH: Climb to 1200 then climbing left turn to 3000 direct FDV NDB and hold.
--	---

AFIS 119.925	ANCHORAGE CENTER 133.3 290.4	NOME RADIO 123.6 (CTAF) 0
-----------------	---------------------------------	------------------------------



AK, 07 AUG 2025 to 02 OCT 2025

AK, 07 AUG 2025 to 02 OCT 2025