

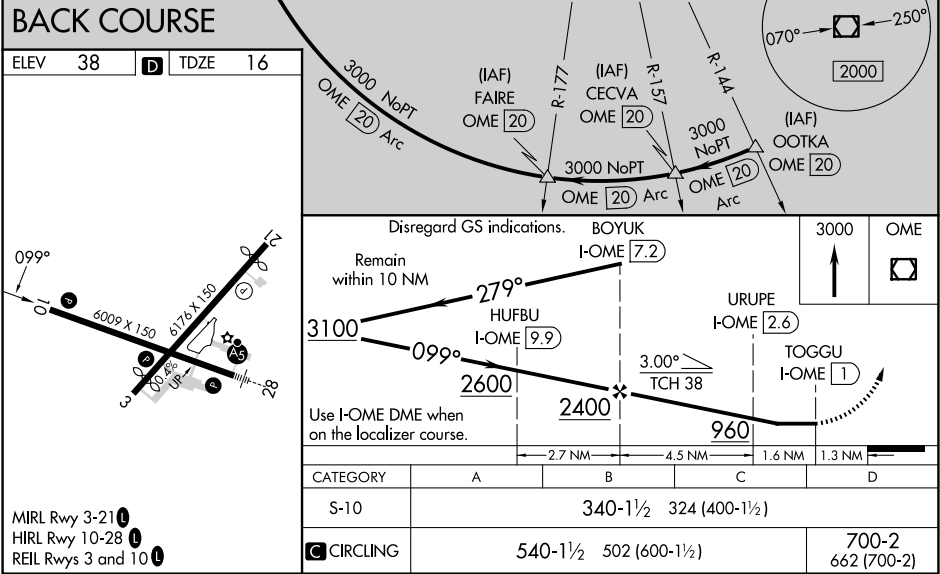
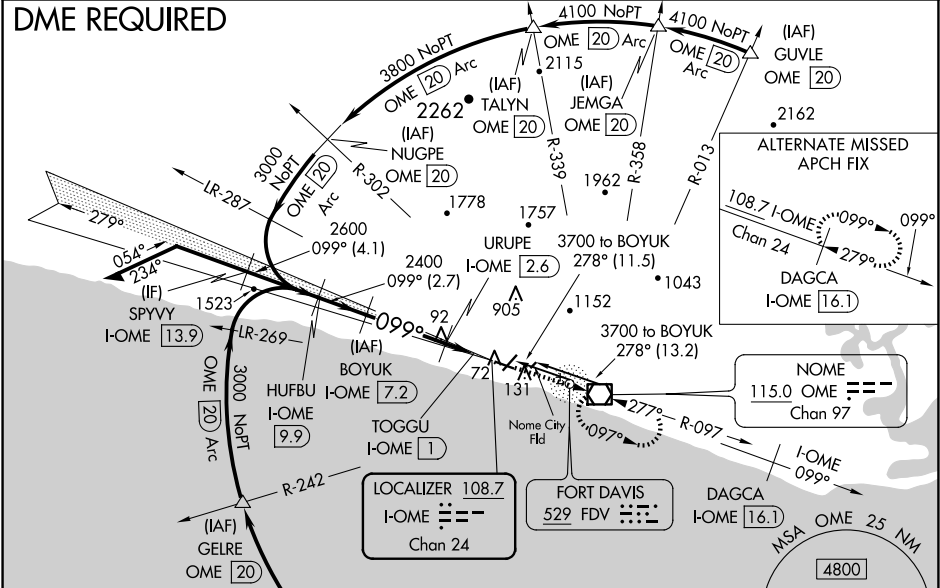
LOC/DME I-OME	APP CRS	Rwy Idg	6009
108.7	099°	TDZE	16
Chan 24		Apt Elev	38

LOC/DME BC RWY 10
NOME (OME) (PAOM)

▼ LOC BC unusable inside TOGGU/I-OME 1 DME. Night landing: Rwy 10 operational VGSi required, remain on or above VGSi glidepath until threshold. Night landing: Rwy 21 NA. Circling NA for Cats C and D north of Rwy 10-28.

MISSED APPROACH: Climb to 3000 direct OME VOR/DME and hold, continue climb-in-hold to 3000.

AFIS 119.925	ANCHORAGE CENTER 133.3 290.4	NOME RADIO 123.6 (CTAF) 0
-----------------	---------------------------------	------------------------------



AK, 07 AUG 2025 to 02 OCT 2025

AK, 07 AUG 2025 to 02 OCT 2025