

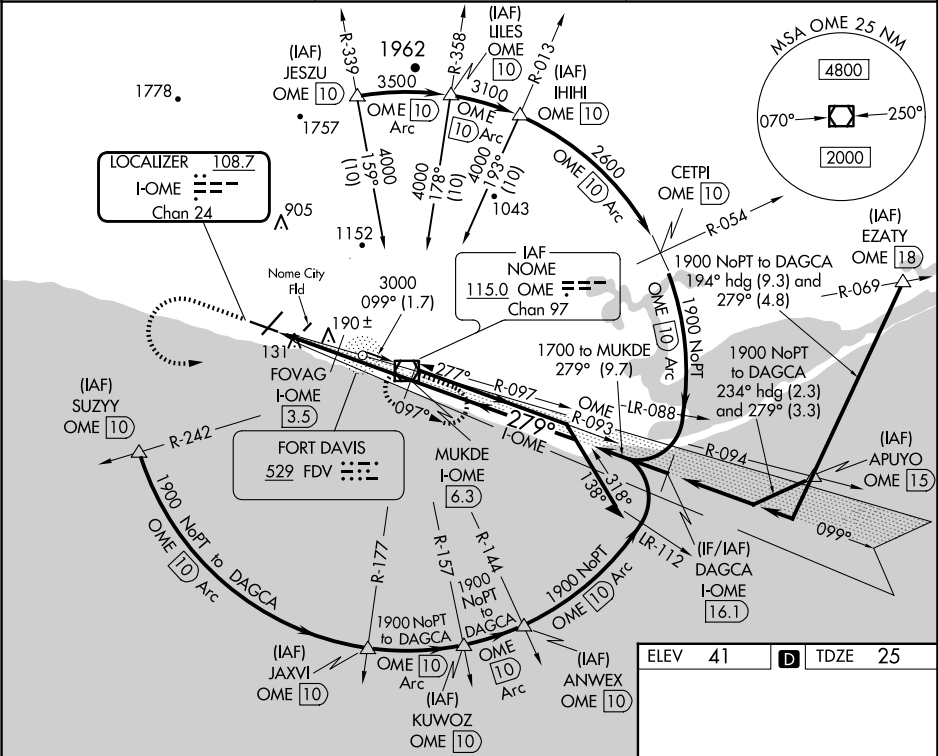
LOC/DME I-OME	APP CRS	Rwy Idg	6009
<b>108.7</b>	<b>279°</b>	TDZE	<b>25</b>
Chan <b>24</b>		Apt Elev	<b>41</b>

ILS Z or LOC Z RWY 28

NOME(OME)(PAOM)

DME required.	MALSRR	MISSED APPROACH: Climb to 1100 then climbing left turn to 3000 direct OME VOR/DME and hold, continue climb-in-hold to 3000.
<div><div>▼</div><div>▲</div></div> <div>Circling Rwy 21 NA at night. Circling NA for Cats C and D north of Rwy 10-28. Inop table does not apply to S-ILS 28 all Cats and S-LOC 28 Cats A and B. For inop ALS, increase S-LOC 28 Cats C and D to RVR 6000.</div>	<div><div>⬆</div><div>⬆</div></div>	

AFIS	ANCHORAGE CENTER	NOME RADIO
<b>119.925</b>	<b>133.3 290.4</b>	<b>123.6 (CTAF) 0</b>



1100 ↑	3000 ↷	OME ☐	Use I-OME DME when on the localizer course.			
			OME VOR/DME 6000 2400	OME 093°	Remain within 10 NM	
*LOC only.			FOVAG I-OME 3.5	MUKDE I-OME 6.3	1900	
I-OME 1.2			*I-OME 2.4	1700	279° I-OME	GS 3.00° TCH 51
1.2 NM			1.1 NM	800*	1700	
CATEGORY	A	B	C	D		
S-ILS 28	275/50		250 (300-1)			
S-LOC 28	440/50		415 (400-1)			
CIRCLING	540-1	499 (500-1)	540-1½ 499 (500-1½)	700-2 659 (700-2)		

ELEV 41	TDZE 25
<div><div>10</div><div>5009 X 150</div><div>6176 X 150</div><div>100.4</div><div>28</div><div>279°</div></div>	
REIL Rwys 3 and 10	
HIRL Rwy 10-28	
MIRL Rwy 3-21	