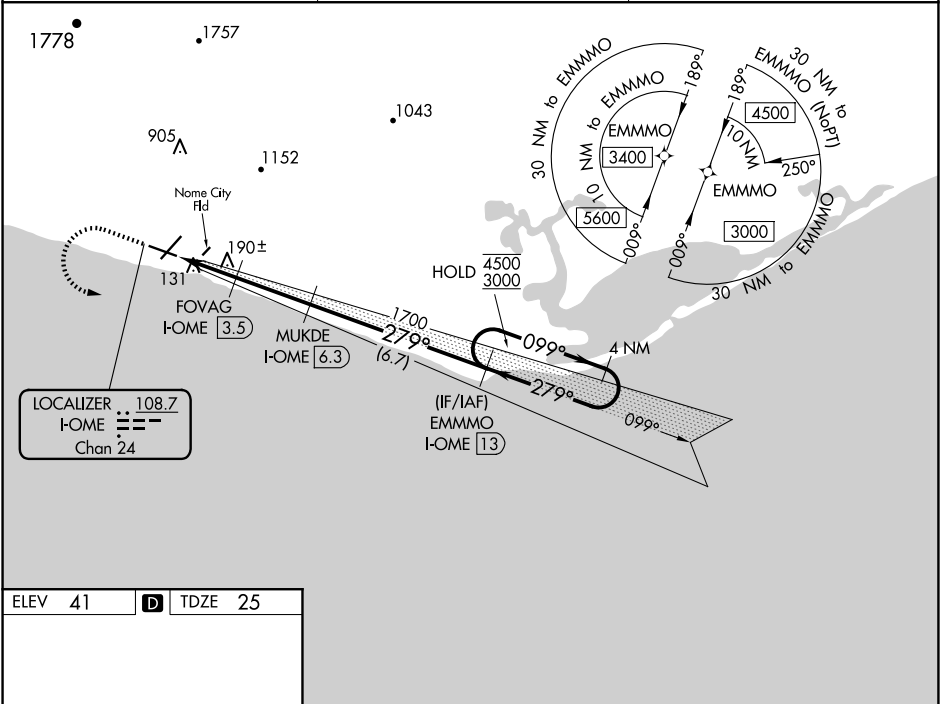


LOC/DME I-OME	APP CRS	Rwy Idg	6009
108.7	279°	TDZE	25
Chan 24		Apt Elev	41

ILS Y or LOC Y RWY 28
NOME (OME)(PAOM)

RNAV 1-GPS required. DME required.	MALSR	MISSED APPROACH: Climb to 1300 then climbing left turn to 3000 direct EMMMO and hold.
<p>▼ Circling Rwy 21 NA at night. Rwy 28 helicopter visibility reduction below RVR 4000 NA. For inop ALS, increase S-LOC 28 Cats A/B visibility to RVR 5500 and Cats C/D visibility to RVR 6000. Inop table does not apply to S-ILS Rwy 28. Circling NA for Cats C and D north of Rwy 10-28.</p>		

AFIS 119.925	ANCHORAGE CENTER 133.3 290.4	NOME RADIO 123.6 (CTAF) 1
------------------------	--	-------------------------------------



REIL Rwy 3 and 10 **L**
HIRL Rwy 10-28 **L**
MIRL Rwy 3-21 **L**

1300 ↑		3000 ↶		EMMMO I-OME [13]		Use I-OME DME when on localizer course.		EMMMO I-OME [13]		4 NM Holding Pattern	
* LOC only.		FOVAG I-OME [3.5]		MUKDE I-OME [6.3]		099° → 4500 ← 279° 3000		279°		GS 3.00° TCH 51	
I-OME [1.2]		* I-OME [2.4]		1700		1700		800*			
1.2 NM		1.1 NM		2.8 NM		6.7 NM					
CATEGORY		A		B		C		D			
S-ILS 28		275/40		250 (300-¾)							
S-LOC 28		440/40		415 (400-¾)							
C CIRCLING		540-1 499 (500-1)		540-1½ 499 (500-1½)		700-2 659 (700-2)					