

GALENA, ALASKA

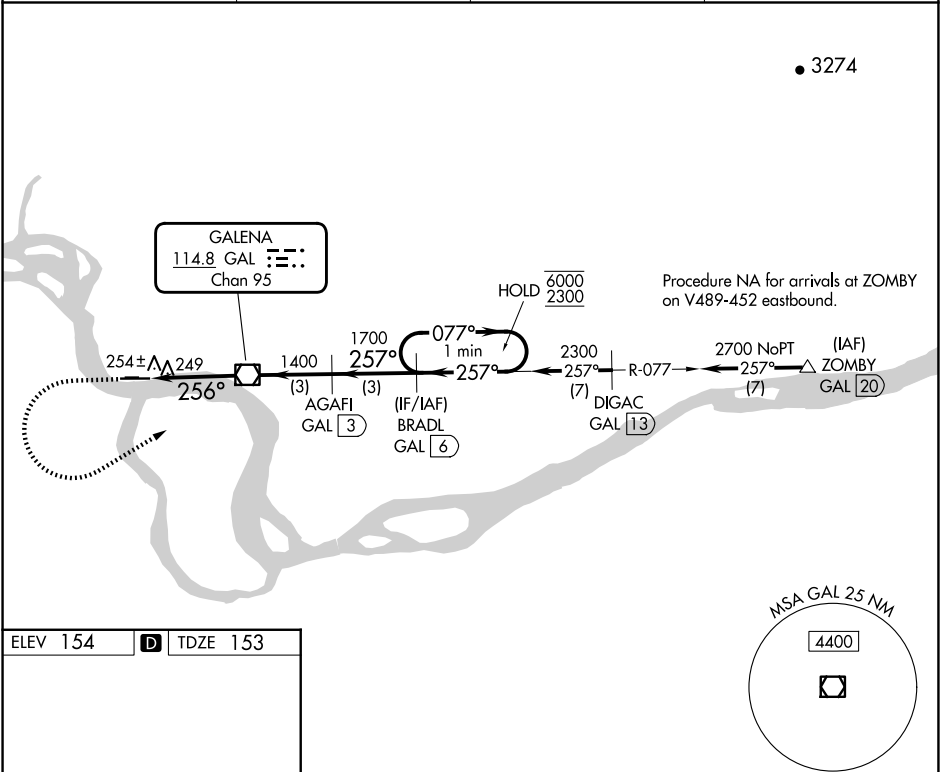
AL-1229 (FAA)

23278

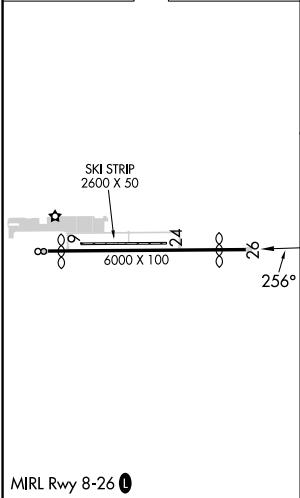
VOR/DME GAL	APP CRS	Rwy Idg	5200
114.8	256°	TDZE	153
Chan 95		Apt Elev	154

VOR RWY 26
EDWARD G PITKA SR (GAL)(PAGA)

DME required.		MISSED APPROACH: Climb to 600 then climbing left turn to 2300 on heading 047° and GAL VOR/DME R-077 to BRADL/6 DME and hold.	
AWOS-3P 132.525	ANCHORAGE CENTER 127.0 290.2	FAIRBANKS RADIO 122.2	CTAF 123.0 0



ELEV 154	D	TDZE 153
----------	---	----------



<div><div><div>600</div><div>2300</div><div>hdg 047°</div><div>GAL R-077</div><div>BRADL GAL 6</div></div><div><div>AGAFI GAL 3</div><div>BRADL GAL 6</div><div>One Minute Holding Pattern</div><div>077° → 6000</div><div>← 257° 2300</div></div><div><div><div>GAL 2.7</div><div>≤ 3.06°</div><div>TCH 60</div><div>256°</div><div>1400</div></div><div><div>GAL 3.7</div><div>257°</div><div>1700</div></div><div><div>0.9</div><div>2.7 NM</div><div>3 NM</div><div>3 NM</div></div></div></div>				
CATEGORY	A	B	C	D
S-26	520-1 367 (400-1)			
CIRCLING	560-1 406 (500-1)	620-1 466 (500-1)	620-1½ 466 (500-1½)	740-2 586 (600-2)

GALENA, ALASKA
Orig 05OCT23

EDWARD G PITKA SR (GAL)(PAGA)

64°44'N-156°56'W

VOR RWY 26

AK, 07 AUG 2025 to 02 OCT 2025

AK, 07 AUG 2025 to 02 OCT 2025