

WAAS CH 86907 W08A	APP CRS 076°	Rwy Idg 5600 TDZE 152 Apt Elev 154
--	------------------------	---

RNAV (GPS) RWY 8

EDWARD G PITKA SR (GAL)(PAGA)

RNP APCH.

T

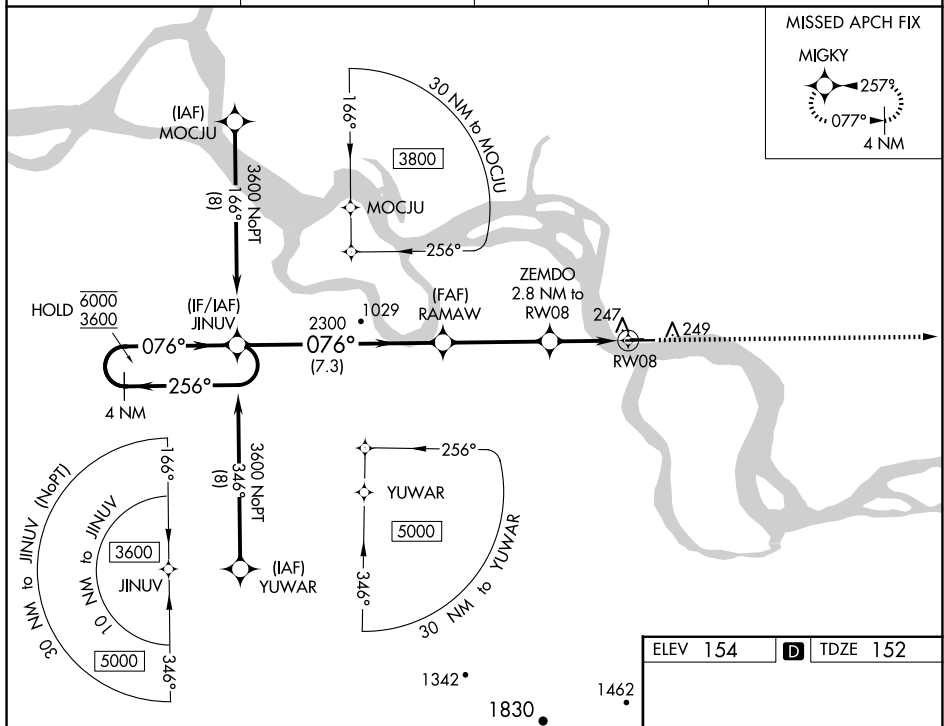
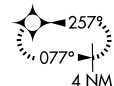
For uncompensated Baro-VNAV systems, LNAV/VNAV NA below -20°C or above 54°C.

MISSED APPROACH: Climb to 3600 direct MIGKY and hold.

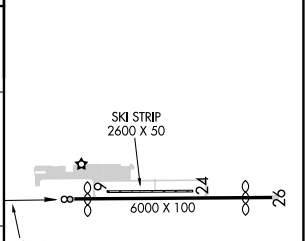
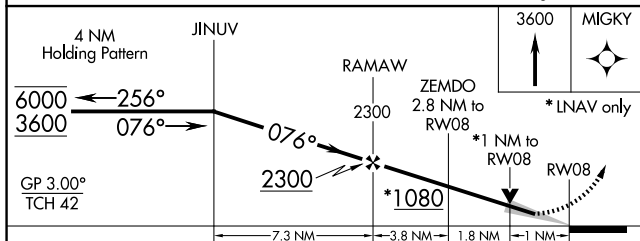
AWOS-3P 132.525	ANCHORAGE CENTER 127.0 290.2	FAIRBANKS RADIO 122.2	CTAF 123.0
--------------------	---------------------------------	--------------------------	---------------

MISSED APCH FIX

MIGKY



ELEV 154	D	TDZE 152
----------	----------	----------



CATEGORY	A	B	C	D
LPV DA		402-1	250 (300-1)	
LNAV/ VNAV DA		410-1	258 (300-1)	
LNAV MDA		500-1	348 (400-1)	
C CIRCLING	560-1 406 (500-1)	620-1 466 (500-1)	620-1½ 466 (500-1½)	720-2 566 (600-2)

MIRL Rwy 8-26 **L**