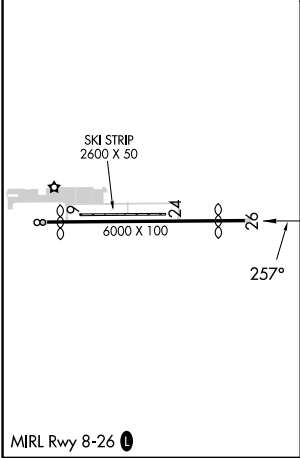
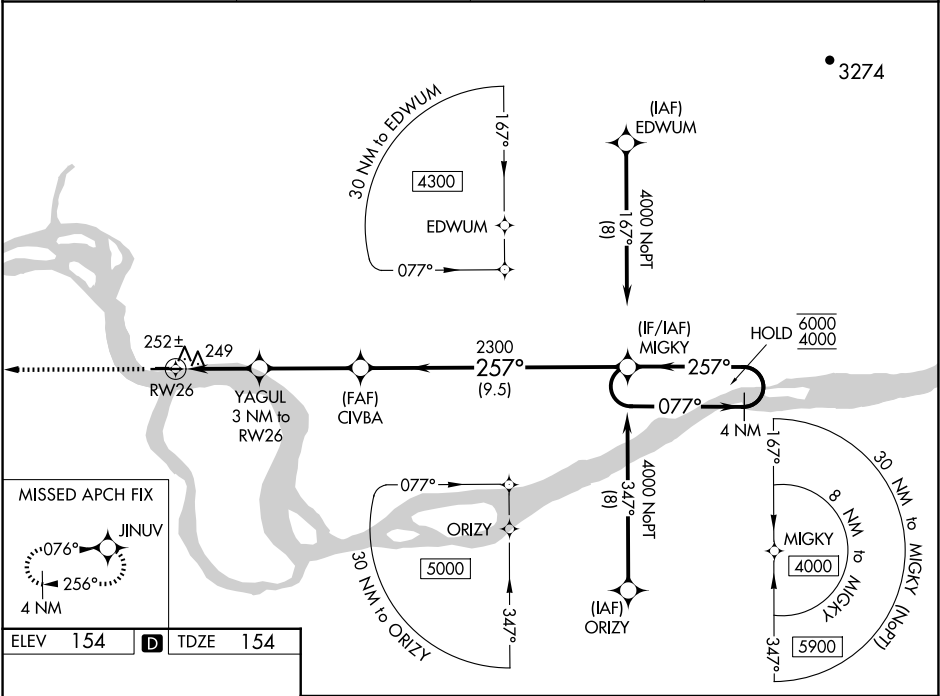


WAAS CH 77707 W26A	APP CRS 257°	Rwy Idg 5200 TDZE 154 Apt Elev 154
--	------------------------	---

RNAV (GPS) RWY 26
EDWARD G PITKA SR (GAL)(PAGA)

RNP APCH. ▼ For uncompensated Baro-VNAV systems, LNAV/VNAV NA below -20°C or above 54°C.	MISSED APPROACH: Climb to 3600 direct JINUV and hold, continue climb-in-hold to 3600.
---	---

AWOS-3P 132.525	ANCHORAGE CENTER 127.0 290.2	FAIRBANKS RADIO 122.2	CTAF 123.0 0
---------------------------	--	---------------------------------	------------------------



3600 JINUV	YAGUL 3 NM to RW26	CIVBA 2300	MIGKY 2300	4 NM Holding Pattern
* LNAV only	* 1 NM to RW26	1140*	257°	077° → 6000 ← 257° 4000
RW26	1 NM	2 NM	3.6 NM	9.5 NM
GP 3.00° TCH 42				
CATEGORY	A	B	C	D
LPV DA		404-1	250 (300-1)	
LNAV/VNAV DA		414-1	260 (300-1)	
LNAV MDA		520-1	366 (400-1)	
CIRCLING	560-1 406 (500-1)	620-1 466 (500-1)	620-1½ 466 (500-1½)	720-2 566 (600-2)