

APP CRS
070°

Rwy Idg
4400

TDZE
235

Apt Elev
242

RNAV (GPS) RWY 7

RALPH M CALHOUN MEML (TAL) (PATA)

RNP APCH-GPS.

▼

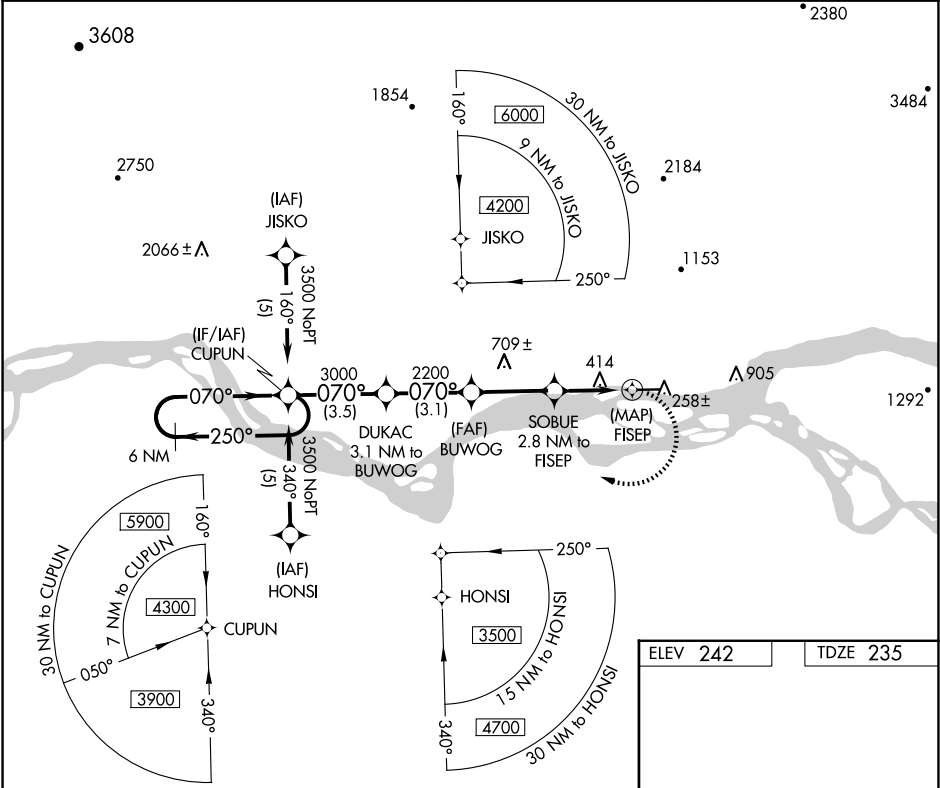
▲

Circling NA north of Rwy 7-25.

Rwy 7 helicopter visibility reduction below ¾ SM NA.

MISSED APPROACH: Climbing right turn to 3500 direct CUPUN and hold.

ASOS 135.1	ANCHORAGE CENTER 120.9 285.4	FAIRBANKS RADIO 122.65	CTAF 122.9 0
----------------------	--	----------------------------------	------------------------



6 NM Holding Pattern

CUPUN

VGSI and descent angles not coincident (VGSI Angle 3.00/TCH 24).

DUKAC 3.1 NM to BUWOG

BUWOG

SOBUE 2.8 NM to FISEP

FISEP

3500

250°

070°

3000

2200

1240

3.05° TCH 35

1.4 NM to FISEP

1.4 NM

0.2

3500

CUPUN

070°

4400 X 100

0.3% UP

283

CATEGORY	A	B	C	D
LNVA MDA	760-1 525 (600-1)	760-1 ½ 525 (600-1 ½)	760-1 ½ 525 (600-1 ½)	760-1 ½ 525 (600-1 ½)
CIRCLING	760-1 518 (600-1)	1260-3 1018 (1100-3)	1260-3 1018 (1100-3)	1260-3 1018 (1100-3)

MIRL Rwy 7-25 0