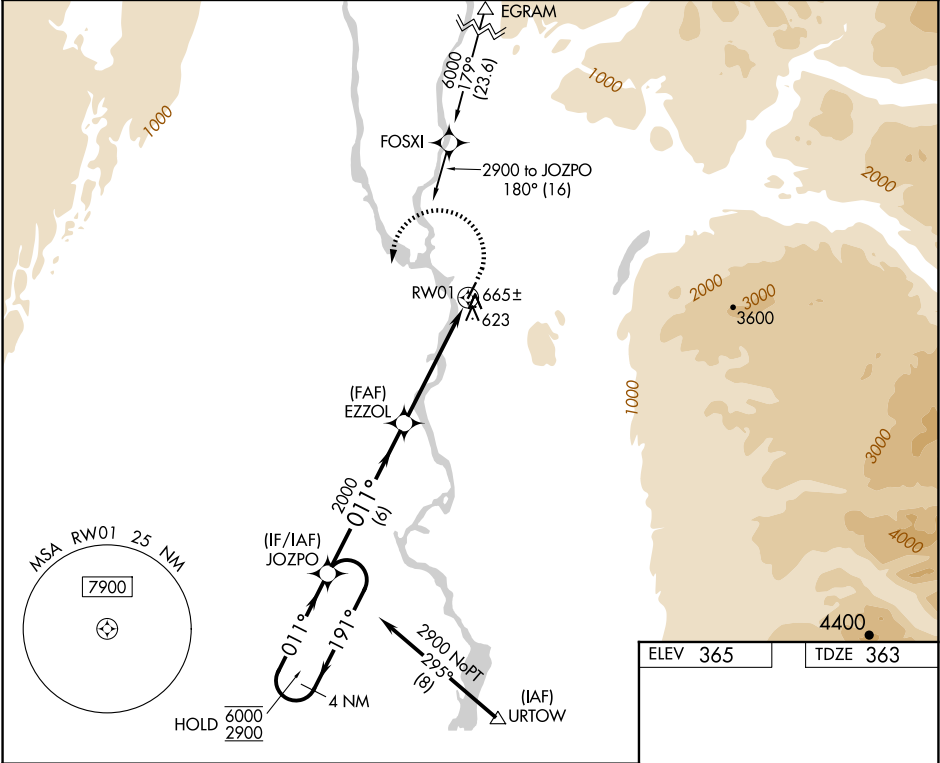


APP CRS	Rwy Ldg	3500
011°	TDZE	363
	Apt Elev	365

RNAV (GPS) RWY 1
TALKEETNA(TKA)(PATK)

RNP APCH.	MISSED APPROACH: Climb to 800 then climbing left turn to 2900 direct JOZPO and hold.
<div><div>▼</div><div>▲</div><div>⚡</div></div> <div>Circling NA east of Rwy 1-19. Rwy 1 helicopter visibility reduction below ¾ SM NA. For uncompensated Baro-VNAV systems, LNAV/VNAV NA below -20°C or above 54°C.</div>	

AFIS 135.2	ANCHORAGE CENTER 125.55 254.3	TALKEETNA RADIO 123.6 (CTAF) 0	UNICOM 123.0
---------------	----------------------------------	-----------------------------------	-----------------



VGSI and RNAV glidepath not coincident (VGSI Angle 3.00/TCH 23).				
4 NM Holding Pattern	JOZPO	EZZOL	RW01	JOZPO
6000 ← 191°	2900 → 011°	2000	* 1.7 NM to RW01	* LNAV only
GP 3.00° TCH 45				
	6 NM	3.3 NM	1.7 NM	
CATEGORY	A	B	C	D
LNAV/VNAV DA	922-2 559 (600-2)			
LNAV MDA	920-1 557 (600-1)	920-1 557 (600-1)		
CIRCLING	960-1 595 (600-1)	1040-2 675 (700-2)	1200-2 835 (900-2)	

