

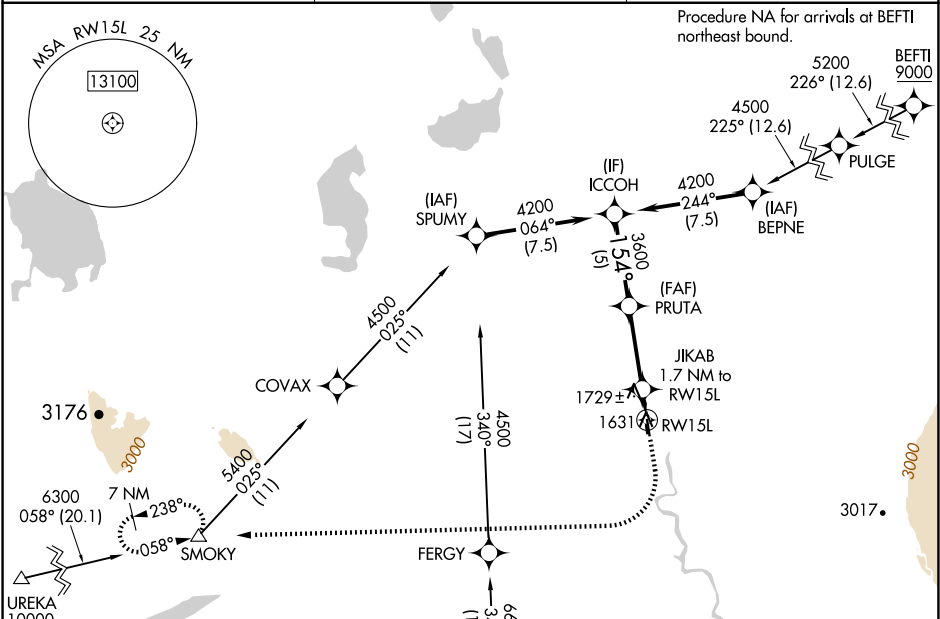
|  |                        |   |
|--|------------------------|---|
| WAAS<br>CH <b>82543</b><br><b>W15A</b> | APP CRS<br><b>154°</b> | Rwy Idg<br>TDZE <b>1586</b><br>Apt Elev <b>1586</b> |
|--|------------------------|---|

RNAV (GPS) RWY 15L

GULKANA (GKN) (PAGK)

|   |  |
|---|--|
| RNP APCH-GPS.<br>▼ Circling Rwy 15R, 33L NA at night. Rwy 15L helicopter visibility reduction below ¾ SM NA. For uncompensated Baro-VNAV systems, LNAV/VNAV NA below -21°C or above 54°C. | MISSED APPROACH: Climb to 2100 then climbing right turn to 7000 direct SMOKY and hold, continue climb-in-hold to 7000. |
|---|--|

|                       |  |                        |
|-----------------------|--|------------------------|
| ASOS<br><b>134.85</b> | ANCHORAGE CENTER<br><b>119.5 317.5</b> | CTAF<br><b>122.9 0</b> |
|-----------------------|--|------------------------|



|               |  |                    |  |
|---------------|--|--------------------|--|
| ELEV 1586     |  | TDZE 1586          |  |
| 154°          |  | 15L                |  |
| 5001 X 1000   |  | 33L                |  |
| 2000 X 60     |  | 33R                |  |
| -0.9 % UP     |  | -0.8 % UP          |  |
| GP 3.00°      |  | TCH 49             |  |
| ICCOH         |  | PRUTA              |  |
| 4200          |  | 3600               |  |
| 154°          |  | 154°               |  |
| 3600          |  | 2160               |  |
| 5 NM          |  | 4.5 NM             |  |
| 1.7 NM        |  | RW15L              |  |
| CATEGORY      |  | A                  |  |
| LNAV/         |  | DA                 |  |
| 1836-1        |  | 250 (300-1)        |  |
| LPV           |  | DA                 |  |
| 1877-1        |  | 291 (300-1)        |  |
| LNAV          |  | MDA                |  |
| 2040-1        |  | 454 (500-1)        |  |
| 2040-1 ¾      |  | 454 (500-1 ¾)      |  |
| CIRCLING      |  | 2040-1             |  |
| 454 (500-1)   |  | 2080-1             |  |
| 494 (500-1)   |  | 2080-1 ½           |  |
| 494 (500-1 ½) |  | 2200-2             |  |
| 614 (700-2)   |  | MIRL Rwy 15L-33R 0 |  |