

RNAV (GPS) RWY 25

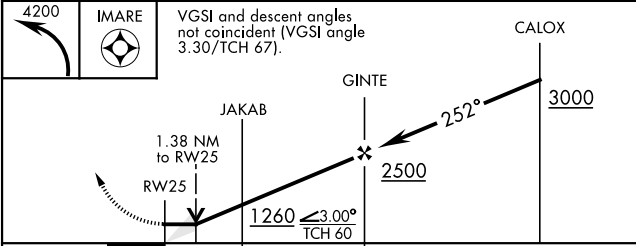
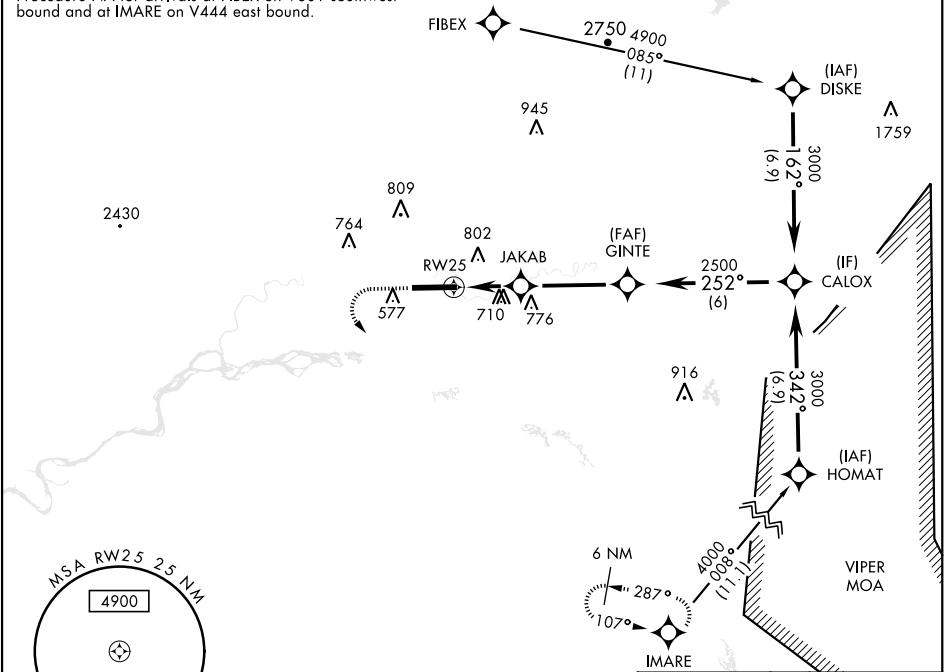
APCH CRS	Rwy Idg
252°	8575
TDZE	449
Arpt Elev	449

AL-1219 [USA]

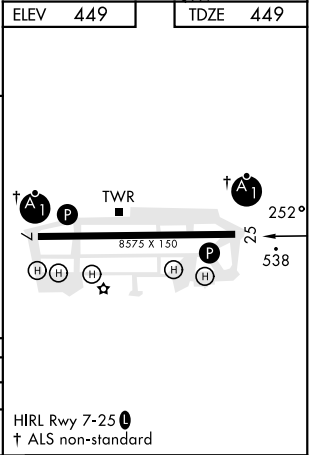
LADD AAF (PAFB)

RNP APCH-GPS		ALSF-1	MISSED APPROACH: Climbing left turn to 4200 direct IMARE and hold.	
▼ * When ALS inop, increase CAT CD vis to 1½ miles. ** Circling not authorized N of Rwy 7-25.				
ATIS	FAIRBANKS APP CON	TOWER★	GND CON	ASR/PAR
134.25	127.1 251.1 360°-179° 125.35 363.2 180°-359°	125.0 (CTAF) 0 284.6	121.7 263.15	

Procedure NA for arrivals at FIBEX on V301 southwest bound and at IMARE on V444 east bound.



CATEGORY	A	B	C	D
LNAV MDA*	1000-1 551 (600-1)	1000-1½ 551 (600-1½)	1000-1½ 551 (600-1½)	1000-1½ 551 (600-1½)
** CIRCLING	1000-1 551 (600-1)	1040-1 591 (600-1)	1080-1¾ 631 (700-1¾)	1160-2¼ 711 (800-2¼)



RNAV (GPS) RWY 25