

VOR/DME or TACAN RWY 19

VORTAC BIG <b>114.9</b> Chan <b>96</b>	APCH CRS <b>197°</b>	Rwy Idg <b>8000</b> TDZE <b>1239</b> Arpt Elev <b>1285</b>
--	-------------------------	--

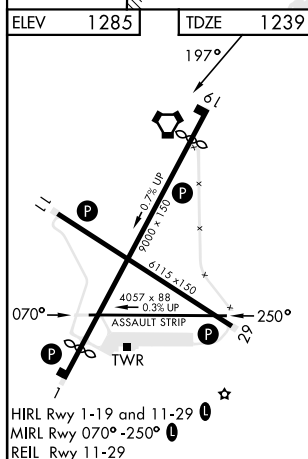
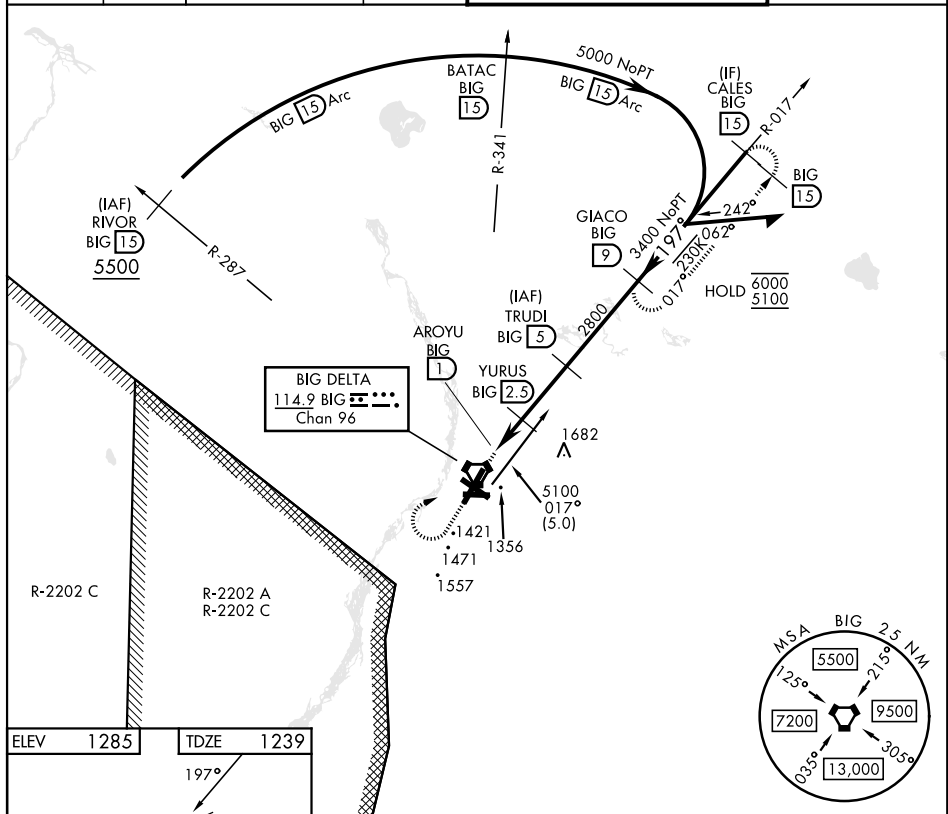
[USA]

ALLEN AAF (PABI)

\* Circling not authorized East of Rwy 1-19.

**MISSED APPROACH:** Climb to 2100, then climbing right turn to 5100 via BIG R-017 to GIACO/9 DME and hold, continue climb in hold to 5100.

ATIS 132.075	ASOS 135.65	ANCHORAGE CENTER 135.3 322.5	CTAF 122.9	TOWER ★ 119.8 235.775 40.8 (E) FM	GND CON 118.225 251.05
-----------------	----------------	---------------------------------	---------------	--------------------------------------	---------------------------



2100 ↑	5100 BIG R-017	GIACO 	TRUDI 	VGSI and descent angles not coincident.
CATEGORY	A	B	C	D
S-19	1660-1 421 (400-1)	1660-1 ¼ 421 (400-1 ¼)		
CIRCLING *	1740-1 455 (500-1)	1780-1 495 (500-1)	1860-1 ½ 575 (600-1 ½)	2040-2 ½ 755 (800-2 ½)

DELTA JUNCTION/FORT GREELY, ALASKA

64°00'N-145°43'W

ALLEN AAF (PABI)

Amdt 3 07AUG25

VOR/DME or TACAN RWY 19

AK, 07 AUG 2025 to 02 OCT 2025

AK, 07 AUG 2025 to 02 OCT 2025