

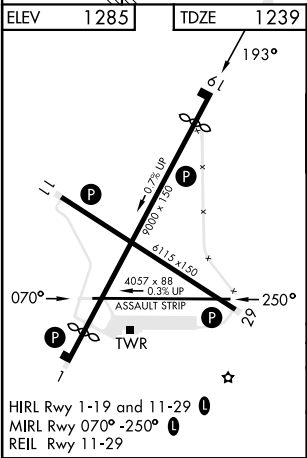
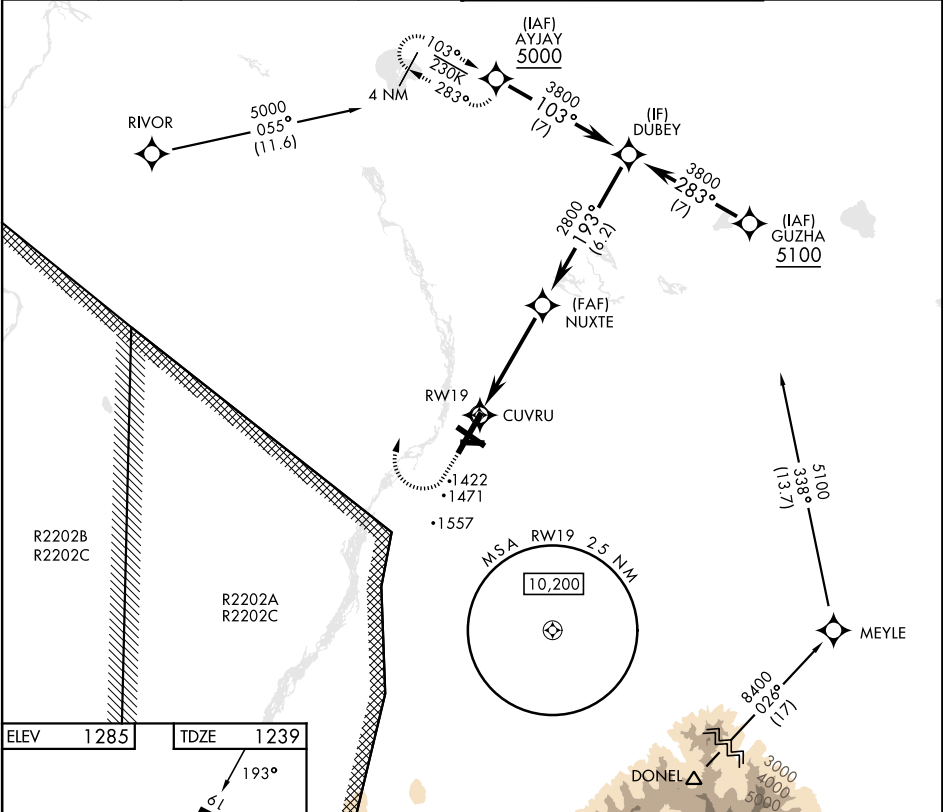
RNAV (GPS) RWY 19




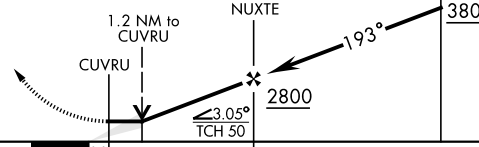
APCH CRS	Rwy Idg	8000
193°	TDZE	1239
	Arpt Elev	1285

[USA]

ALLEN AAF (PABI)

RNP APCH - GPS				MISSED APPROACH: (Do not exceed 250 KIAS until initial turn completion.) Climb to 1800 then climbing right turn to 5000, direct AYJAY, continue climb in hold to 5000.			
* Circling not authorized East of Rwy 1-19.							
ATIS	ASOS	ANCHORAGE CENTER	CTAF	TOWER ★		GND CON	
132.075	135.65	135.3 322.5	122.9	119.8 235.775 40.8 (E) FM		118.225 251.05	



1800 		5000 		AYJAY 		VGSi and descent angles not coincident [VGSi angle 3.00/TCH 74]			
						DUBEY			
									
CATEGORY		A		B		C		D	
LNAV MDA		1740-1		501 (500-1)		1740-1½		501 (500-1½)	
CIRCLING *		1740-1		1780-1		1860-1½		2040-2½	
		455 (500-1)		495 (500-1)		575 (600-1½)		755 (800-2½)	

RNAV (GPS) RWY 19

AK, 07 AUG 2025 to 02 OCT 2025

AK, 07 AUG 2025 to 02 OCT 2025