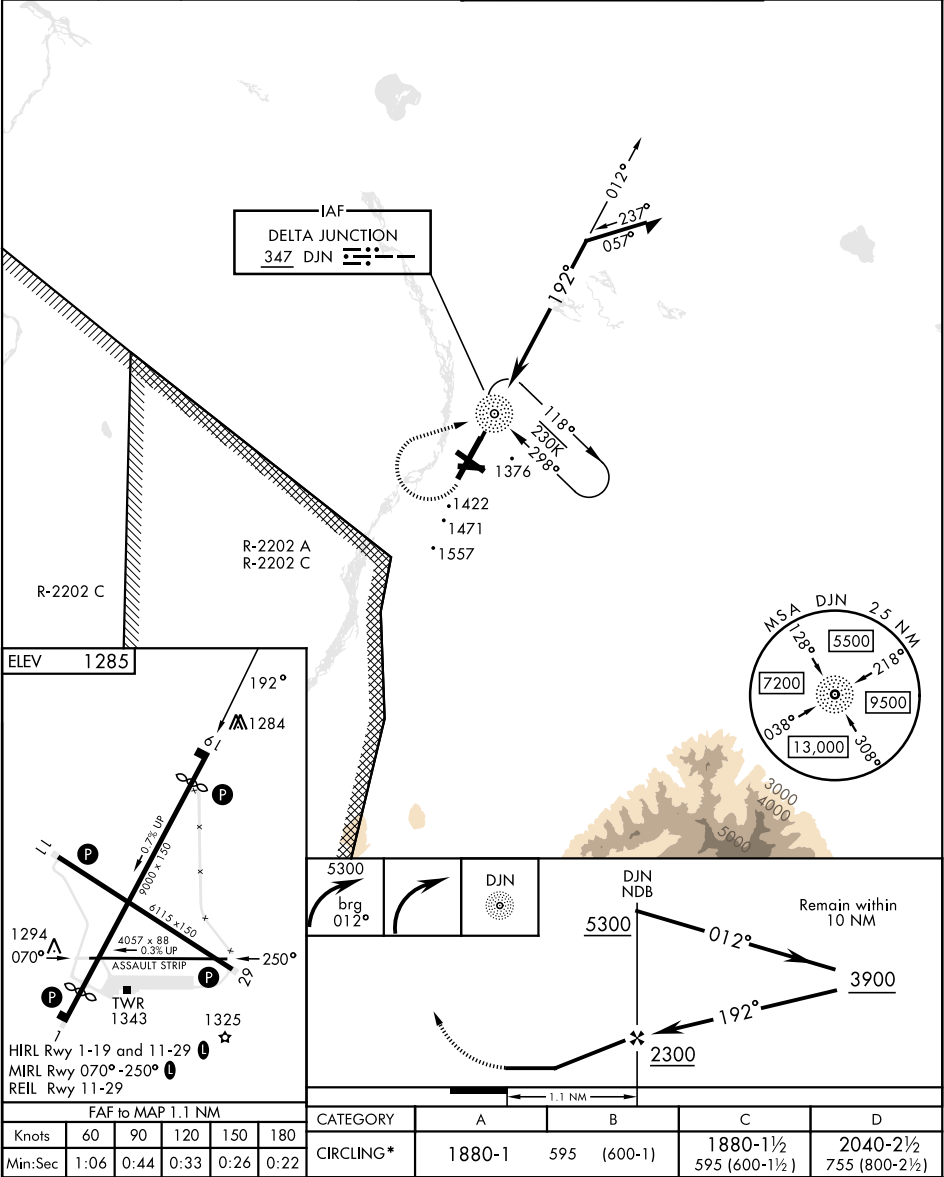


NDB DJN <u>347</u>		APCH CRS 192°	Rwy Idg TDZE Arprt Elev N/A N/A 1285	[USA]		ALLEN AAF (PABI)	
RNAV or RADAR required.				MISSED APPROACH: Climbing right turn to 5300 via 012° bearing from DJN NDB, then right turn direct DJN NDB and hold.			
* Circling not authorized East of Rwy 1-19.							
ATIS 132.075	ASOS 135.65	ANCHORAGE CENTER 135.3 322.5		CTAF 122.9	TOWER ★ 119.8 235.775 40.8 (E) FM		GND CON 118.225 251.05



AK, 07 AUG 2025 to 02 OCT 2025

AK, 07 AUG 2025 to 02 OCT 2025