

WAAS CH <b>65646</b> <b>W06A</b>	APP CRS <b>059°</b>	Rwy Idg <b>5100</b> TDZE <b>1720</b> Apt Elev <b>1720</b>
--	------------------------	---

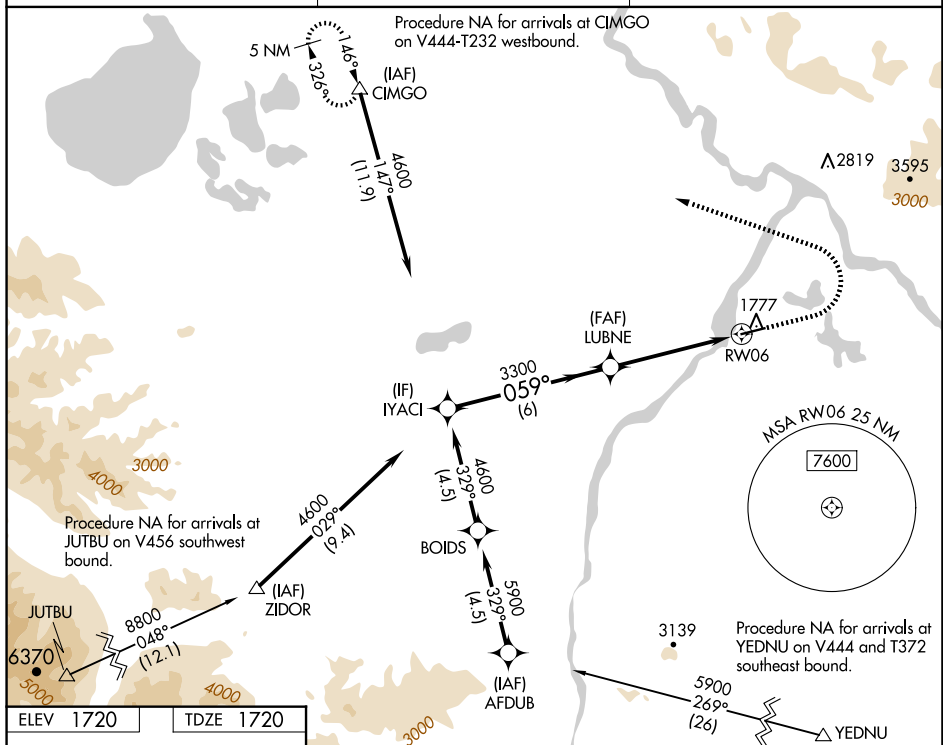
# RNAV (GPS) RWY 6

RNP APCH - GPS.

**T** Rwy 6 helicopter visibility reduction below  $\frac{3}{4}$  SM NA.  
**❄** -37°C For uncompensated Baro-VNAV systems, LNAV/VNAV NA below -23°C or above 54°C.

**MISSED APPROACH:** Climb to 2200 then climbing left turn to 4800 direct CIMGO and hold.

ASOS <b>135.4</b>	ANCHORAGE CENTER <b>126.55 323.0</b>	NORTHWAY RADIO <b>123.6 (CTAF) 0</b>
----------------------	---	---



ELEV	1720		TDZE	1720
------	------	--	------	------

