

TACAN Z RWY 16

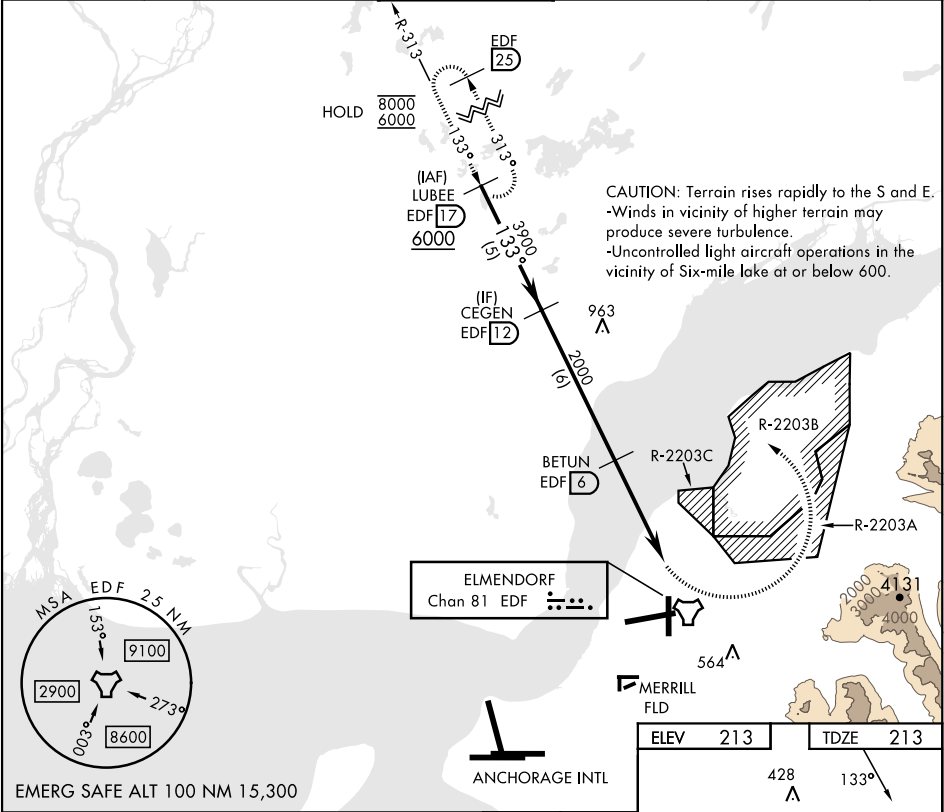
TACAN	EDF	APCH CRS	Rwy Idg	7493
Chan	81	133°	TDZE	213
			Arpt Elev	213

[USAF]

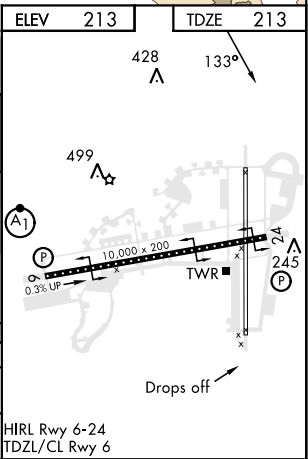
ELMENDORF AFB (PAED)

▼ * Circling not authorized SW of Rwy 6 and 34. Visibility reduction by Helicopters NA.	MISSED APPROACH: Climbing left turn to 6000 via EDF TACAN R-313 to LUBEE and hold. Continue climb-in-hold to 6000.
---	--

ATIS ★ 124.3 273.5	ANCHORAGE APP CON 118.6 290.5 (N) 123.8 259.3 (S)	TOWER 127.2 352.05	GND CON 121.8 275.8	CLNC DEL 128.8 306.925	PAR
-----------------------	---	-----------------------	------------------------	---------------------------	-----



VGSI and descent angles not coincident (VGSI Angle 3.00/TCH 47).				
CATEGORY	A	B	C	D
S-16	740-1	527 (600-1)	740-1½	527 (600-1½)
CIRCLING *	840-1	627 (700-1)	920-2 707 (800-2)	1020-2½ 807 (900-2½)



TACAN Z RWY 16

AK, 07 AUG 2025 to 02 OCT 2025

AK, 07 AUG 2025 to 02 OCT 2025