

TACAN RWY 6

TACAN	EDF	APCH CRS	Rwy Idg	10,000
Chan	81	062°	TDZE	175
			Arpt Elev	213

[USAF]

ELMENDORF AFB (PAED)

T * When ALS inop, increase CAT AB RVR to 55, vis to 1 mile, CAT CDE vis to 1 3/8 miles.
 ** Circling not authorized south of Rwy 6-24.
 *** Circling not authorized SW of Rwy 6 and 34.



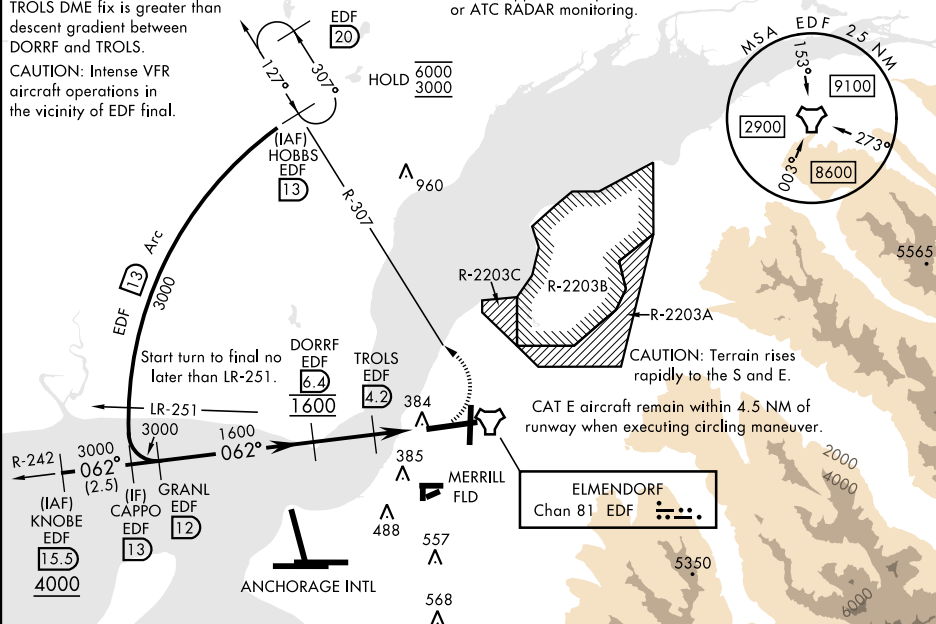
MISSED APPROACH: Climbing left turn to 3000 via EDF R-307 to HOBBS and hold, continue climb-in-hold to 3000.

ATIS ★ 124.3 273.5	ANCHORAGE APP CON 118.6 290.5 (N) 123.8 259.3 (S)	TOWER 127.2 352.05	GND CON 121.8 275.8	CLNC DEL 128.8 306.925	PAR
-----------------------	---	-----------------------	------------------------	---------------------------	-----

CAUTION: Descent gradient after TROLS DME fix is greater than descent gradient between DORR and TROLS.

CAUTION: Intense VFR aircraft operations in the vicinity of EDF final.

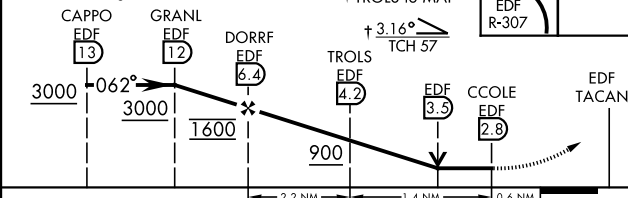
Missed Approach requires use of RNAV or ATC RADAR monitoring.



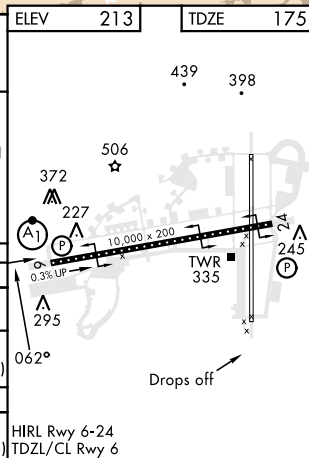
EMERG SAFE ALT 100 NM 15,300

VGSI and descent angles not coincident
(VGSI Angle 3.00/TCH 77).

† TROLS to MAP



CATEGORY	A	B	C	D	E
S-6 *	640/24 465 (500-½)		640/50 465		(500-1)
CIRCLING **	840-1 627 (700-1)		840-1½ 627 (700-1¾)	840-2 627 (700-2)	940-2½ 727 (800-2½)
RWY 34 CIRCLING MINIMUMS					
CIRCLING ***	840-1 627 (700-1)		920-2 707 (800-2)	1020-2½ 807 (900-2½)	1480-3 1267 (1300-3)



TACAN RWY 6