

ANCHORAGE, ALASKA

RNAV (GPS) RWY 6

| | | |
|----------|------------|--------|
| APCH CRS | Rwy Idg | 10,000 |
| 062° | TDZE | 175 |
| | Arprt Elev | 213 |

- (USAF)

ELMENDORF AFB (PAED)

RNP APCH

GPS required.

▼ * When ALS inop increase RVR to 60, vis to 1 1/8 miles.

ALSF-1

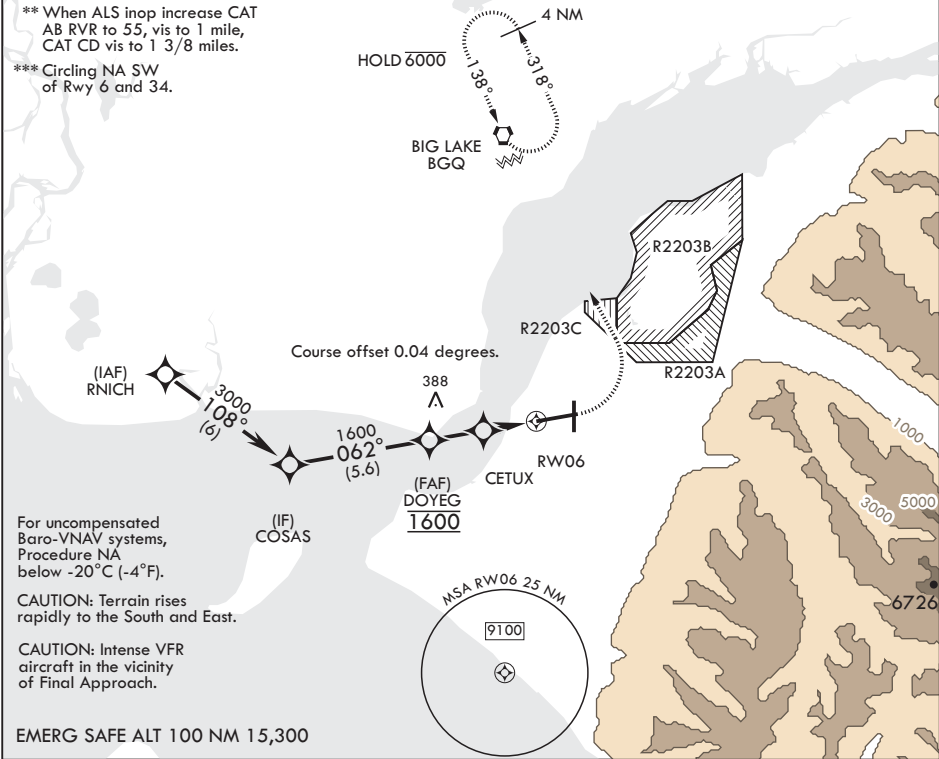


MISSED APPROACH: Climb to 800 then climbing left turn to 3000 direct BGQ and hold.

| | | | | | |
|-------------|---------------------------|--------------|-------------|---------------|-----|
| ATIS★ | ANCHORAGE APP CON/DEP CON | TOWER | GND CON | CLNC DEL | PAR |
| 124.3 273.5 | 118.6 290.5 | 127.2 352.05 | 121.8 275.8 | 128.8 306.925 | |

** When ALS inop increase CAT AB RVR to 55, vis to 1 mile, CAT CD vis to 1 3/8 miles.

*** Circling NA SW of Rwy 6 and 34.



| | | | | | | | | | | | | |
|---------------|--------|------|---------|--------|-------|---------|---------|-------|----------------|------|----------|----------|
| RNAV | 3000 | 108° | 3000 | 062° | DOYEG | 1600 | 900 | CETUX | 1.2 NM to RW06 | RW06 | ELEV 213 | TDZE 175 |
| GP 3.04° | | | | | | | | | | | | |
| TCH 57 | | | | | | | | | | | | |
| CATEGORY | A | B | C | D | | | | | | | | |
| LNAV/VNAV DA* | 561/35 | 386 | (400-¾) | 576/40 | | | | | | | | |
| LNAV MDA** | 640/24 | 465 | (500-½) | 640/50 | 465 | (500-1) | | | | | | |
| CIRCLING*** | 840-1 | 627 | (700-1) | 920-2 | 707 | (800-2) | 1020-2½ | 807 | (900-2½) | | | |
| | | | | | | | | | | | | |

ANCHORAGE, ALASKA

61°15'N - 149°48'W

ELMENDORF AFB (PAED)

Amdt 5 25JAN24

RNAV (GPS) RWY 6

AK, 07 AUG 2025 to 02 OCT 2025

AK, 07 AUG 2025 to 02 OCT 2025