

ILS X RWY 6 (SA CAT I)

LOC I-EDF	APCH CRS	Rwy Idg
110.3	062°	10,000
		TDZE
		175
		Arpt Elev
		213

[USAF]

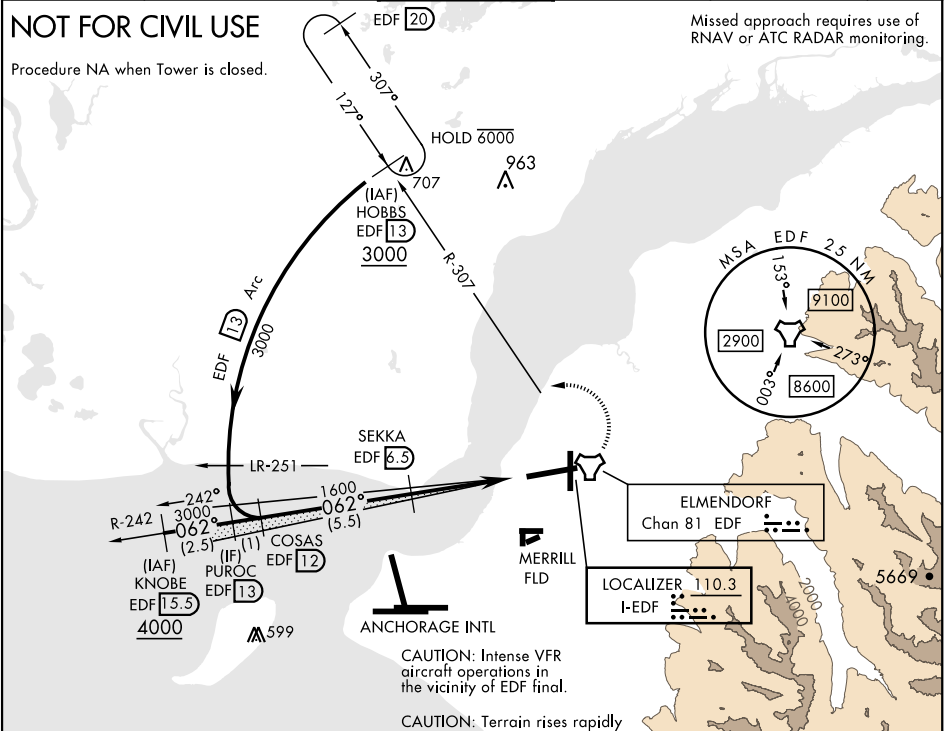
ELMENDORF AFB (PAED)

DME required		ALSIF-1	MISSED APPROACH: Climb to 900, then climbing left turn to 3000 via EDF R-307 to HOBBS and hold.		
Requires MAJCOM flying authority approval and use of HUD to DA.		A1			
ATIS ★	ANCHORAGE APP CON	TOWER	GND CON	CLNC DEL	PAR
124.3 273.5	118.6 290.5 North 123.8 259.3 South	127.2 352.05	121.8 275.8	128.8 306.925	

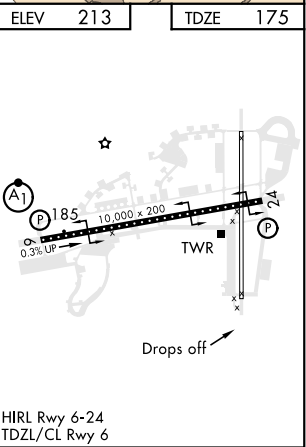
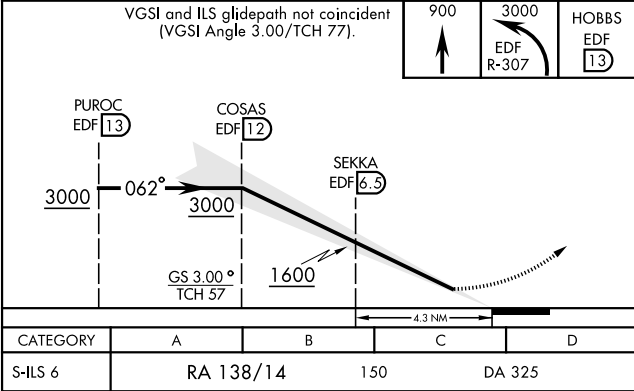
NOT FOR CIVIL USE

Procedure NA when Tower is closed.

Misled approach requires use of RNAV or ATC RADAR monitoring.



EMERG SAFE ALT 100 NM 15,300



ILS X RWY 6 (SA CAT I)

AK, 07 AUG 2025 to 02 OCT 2025

AK, 07 AUG 2025 to 02 OCT 2025