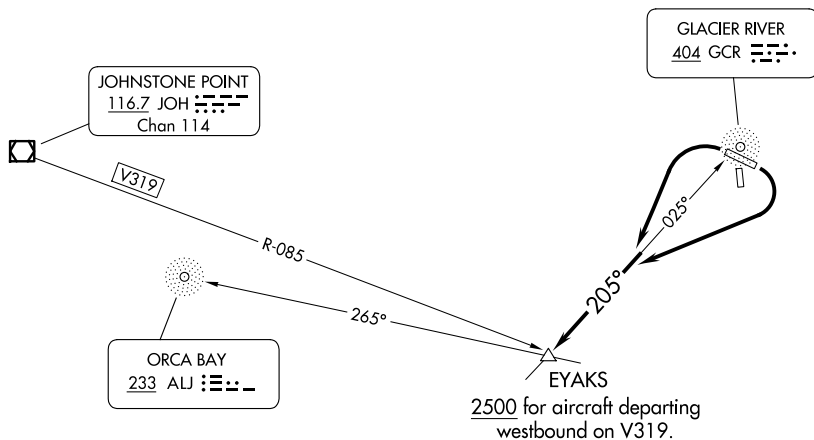


EYAKS SIX DEPARTURE

MERLE K (MUDHOLE) SMITH (CDV) (PACV)  
CORDOVA, ALASKA

ANCHORAGE CENTER  
119.3 133.6 269.4  
JUNEAU RADIO  
122.2 123.6 (CTAF)  
ASOS  
134.8

**TOP ALTITUDE:  
ASSIGNED BY ATC**



Rwys 16, 34: NA-ATC.  
Rwys 9, 27: Standard.

NOTE: Do not exceed 210K until established on 205° bearing from GCR NDB.  
NOTE: ADF required.

NOTE: Chart not to scale.



## DEPARTURE ROUTE DESCRIPTION

TAKEOFF RUNWAY 9: Climbing right turn to intercept bearing 205° from GCR NDB to EYAKS INT, thence. . .

TAKEOFF RUNWAY 27: Climbing left turn to intercept bearing 205° from GCR NDB to EYAKS INT, thence. . .

...on assigned route, maintain ATC assigned altitude.

EYAKS SIX DEPARTURE  
(EYAKS6.EYAKS) 29MAR18

CORDOVA, ALASKA  
MERLE K (MUDHOLE) SMITH (CDV)(PACV)

AK, 07 AUG 2025 to 02 OCT 2025