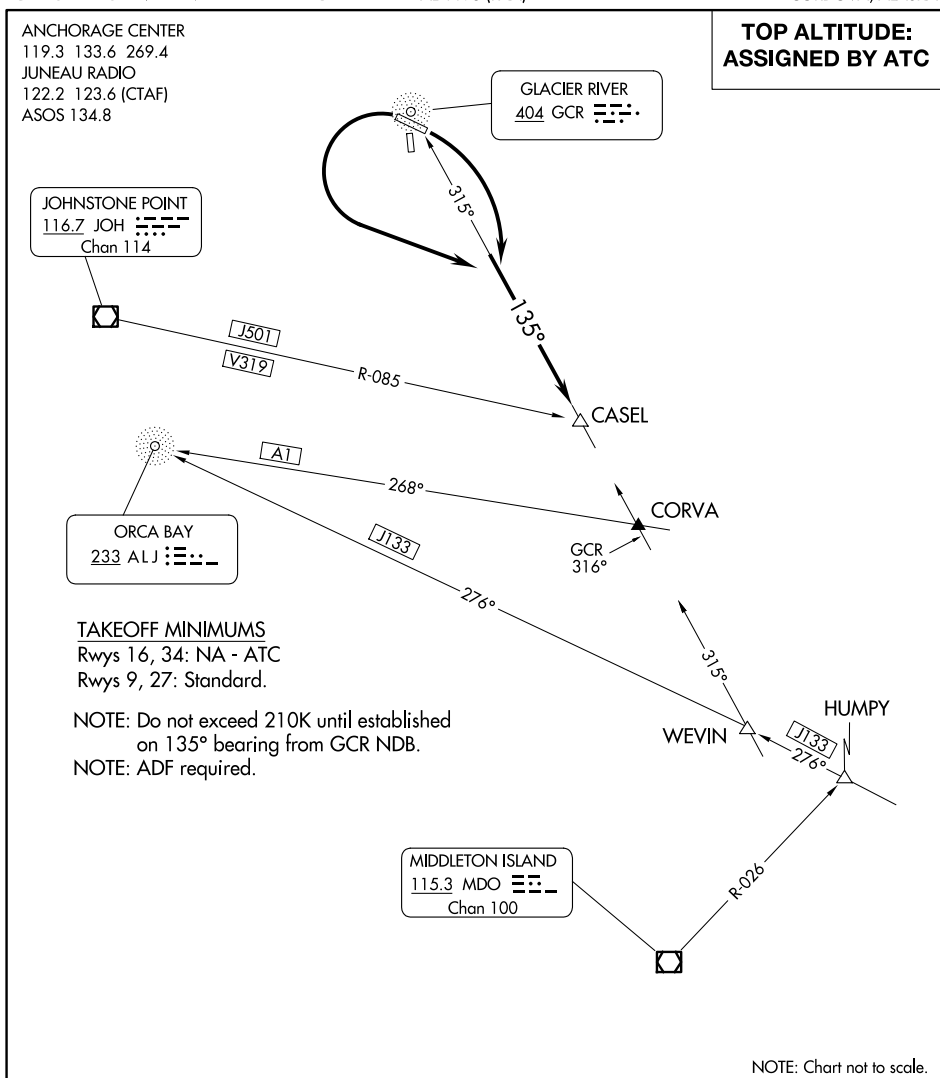


## CASEL SEVEN DEPARTURE

MERLE K (MUDHOLE) SMITH (CDV)(PACV)

CORDOVA, ALASKA

AL-1195 (FAA)



## DEPARTURE ROUTE DESCRIPTION

TAKEOFF RUNWAY 9: Climbing right turn to intercept bearing 135° from GCR NDB to CASEL INT, Thence. . .

TAKEOFF RUNWAY 27: Climbing left turn to intercept bearing 135° from GCR NDB to CASEL INT, Thence. . .

. . . on assigned route, maintain ATC assigned altitude.

## CASEL SEVEN DEPARTURE

(CASEL7.CASEL) 29MAR18

CORDOVA, ALASKA

MERLE K (MUDHOLE) SMITH (CDV)(PACV)

AK, 07 AUG 2025 to 02 OCT 2025

AK, 07 AUG 2025 to 02 OCT 2025