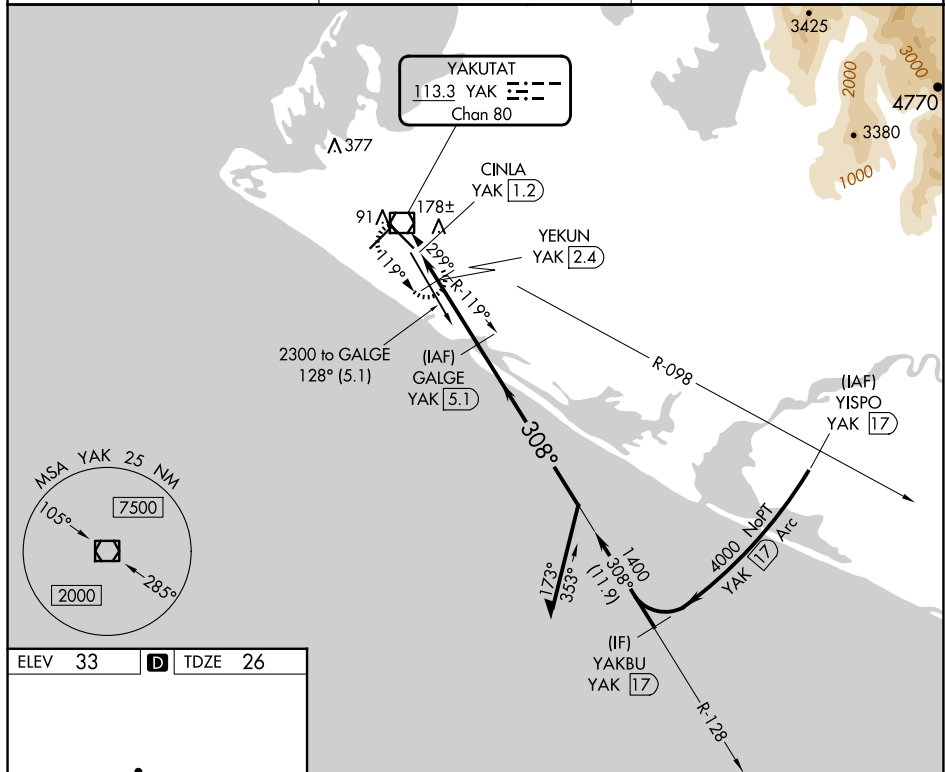


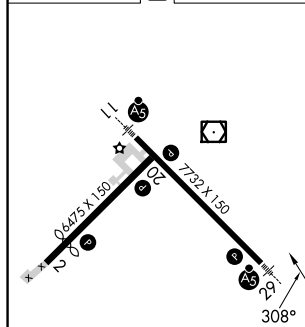
VOR/DME RWY 29
YAKUTAT (YAK) (PAYA)


MISSED APPROACH: Climb to 2000 direct YAK
VOR/DME and hold, continue climb-in-hold to 2000.

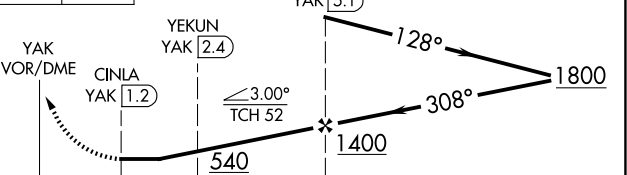
ASOS 135.75	ANCHORAGE CENTER 119.0 263.1	JUNEAU RADIO 123.6 (CTAF) 1
-----------------------	--	---------------------------------------



ELEV 33	D	TDZE 26
---------	----------	---------



2000 ↑	YAK 	VGSI and descent angles not coincident (VGSI Angle 3.00/TCH 51). GALGE YAK (51)	Remain within 10 NM
-----------	--	--	------------------------



	0.3	1.2 NM	2.7 NM	
CATEGORY	A	B	C	D
S-29	440-1 414 (500-1)			
CIRCLING	500-1 467 (500-1)	520-1 487 (500-1)	620-1½ 587 (600-1½)	720-2¼ 687 (700-2¼)

AK. 07 AUG 2025 to 02 OCT 2025