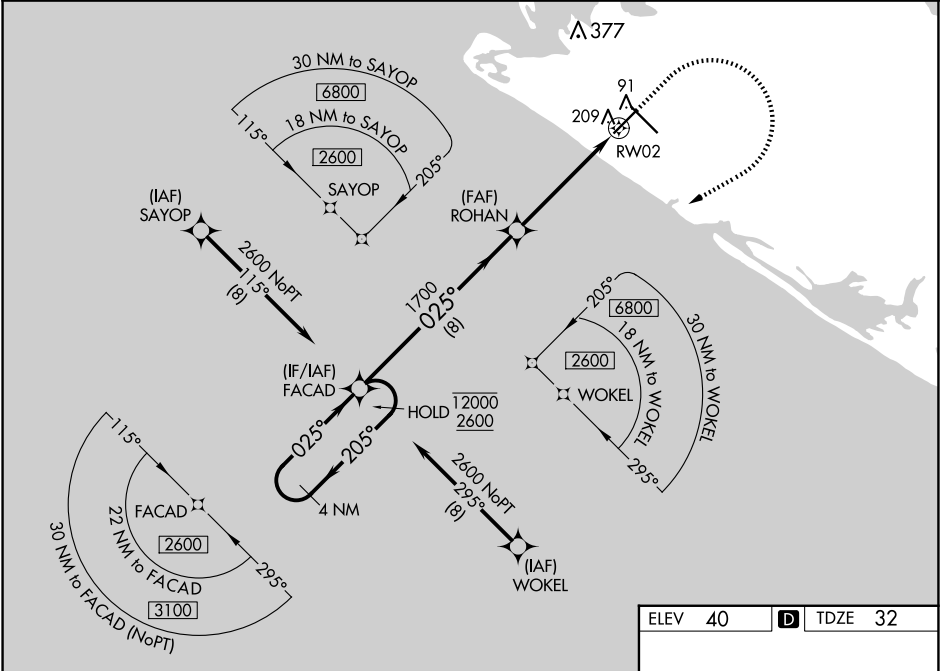


WAAS CH 78414 W02A	APP CRS 025°	Rwy Idg TDZE Apt Elev	5087 32 40
--	------------------------	-----------------------------	---------------------------------------

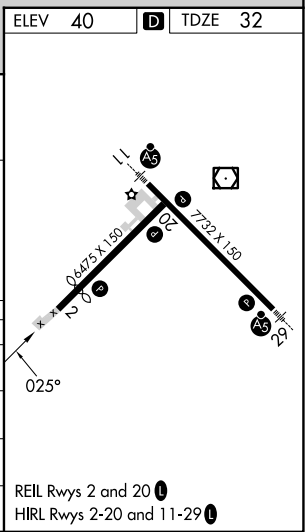
RNAV (GPS) RWY 2
YAKUTAT (YAK) (PAYA)

RNP APCH - GPS. ⚠ Circling Rwy 20 NA at night. Rwy 2 helicopter visibility reduction below ¾ SM NA. When Yakutat altimeter setting not received, procedure NA. For uncompensated Baro-VNAV systems, LNAV/VNAV NA below -16° C or above 54° C.	MISSED APPROACH: Climb to 500 then climbing right turn to 3000 direct FACAD and hold.
--	---

ASOS 135.75	ANCHORAGE CENTER 119.0 263.1	JUNEAU RADIO 123.6 (CTAF) 0
-----------------------	--	---------------------------------------



4 NM Holding Pattern		FACAD		ROHAN		RWY 2	
12000		2600		1700		1700	
GP 3.00°		TCH 30		1.3 NM to RWY 2		RWY 2	
CATEGORY		A		B		C	
LPV DA		297-1		265 (300-1)			
LNAV/VNAV DA		479-1 3/8		447 (500-1 3/8)			
LNAV MDA		460-1		428 (500-1)		460-1 1/4 428 (500-1 1/4)	
CIRCLING		520-1		540-1		820-2 1/4 780 (800-2 1/4)	
		480 (500-1)		500 (500-1)		820-2 1/2 780 (800-2 1/2)	



AK, 07 AUG 2025 to 02 OCT 2025

AK, 07 AUG 2025 to 02 OCT 2025