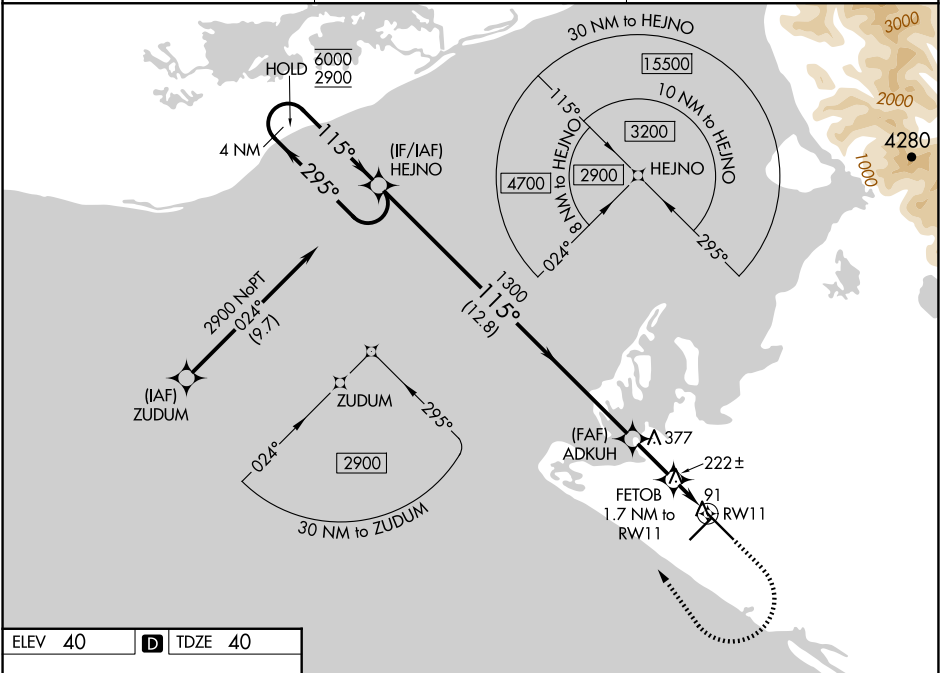


WAAS CH <b>86414</b> <b>W11A</b>	APP CRS <b>115°</b>	Rwy Ldg TDZE Apt Elev <b>7732</b> <b>40</b> <b>40</b>
--	------------------------	--

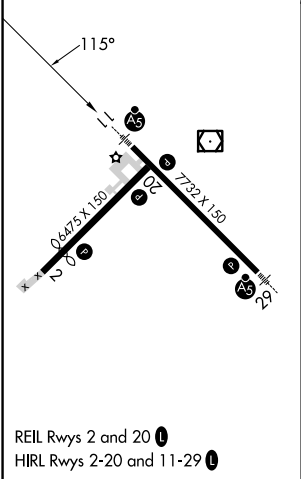
RNAV (GPS) RWY 11  
YAKUTAT (YAK) (PAYA)

RNP APCH - GPS. ⚠ Circling Rwy 20 NA at night. When Yakutat altimeter setting not received, procedure NA. For uncompensated Baro-VNAV systems, LNAV/VNAV NA below -16° C or above 54° C.	MALSR AS	MISSED APPROACH: Climb to 600 then climbing right turn to 2900 direct HEJNO and hold.
---	-------------	---

ASOS <b>135.75</b>	ANCHORAGE CENTER <b>119.0 263.1</b>	JUNEAU RADIO <b>123.6 (CTAF) 0</b>
-----------------------	--	---------------------------------------



ELEV 40	D	TDZE 40
---------	---	---------



4 NM Holding Pattern		HEJNO		600 2900 HEJNO	
6000 2900		115° 295°		GP 3.00° TCH 53	
1300		ADKUH		FETOB 1.7 NM to RW11	
12.8 NM		2.1 NM		0.5 1.2 NM	
CATEGORY	A	B	C	D	
LPV DA	240/24		200 (200-½)		
LNAV/VNAV DA	445/50		405 (500-1)		
LNAV MDA	480/24 440 (500-½)		480/40 440 (500-¾)		
CIRCLING	520-1 480 (500-1)	540-1 500 (500-1)	820-2¼ 780 (800-2¼)	820-2½ 780 (800-2½)	