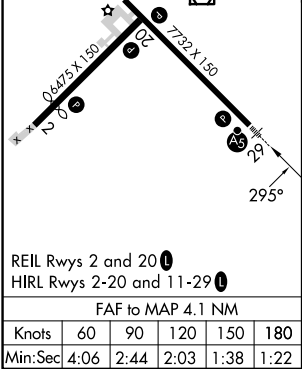
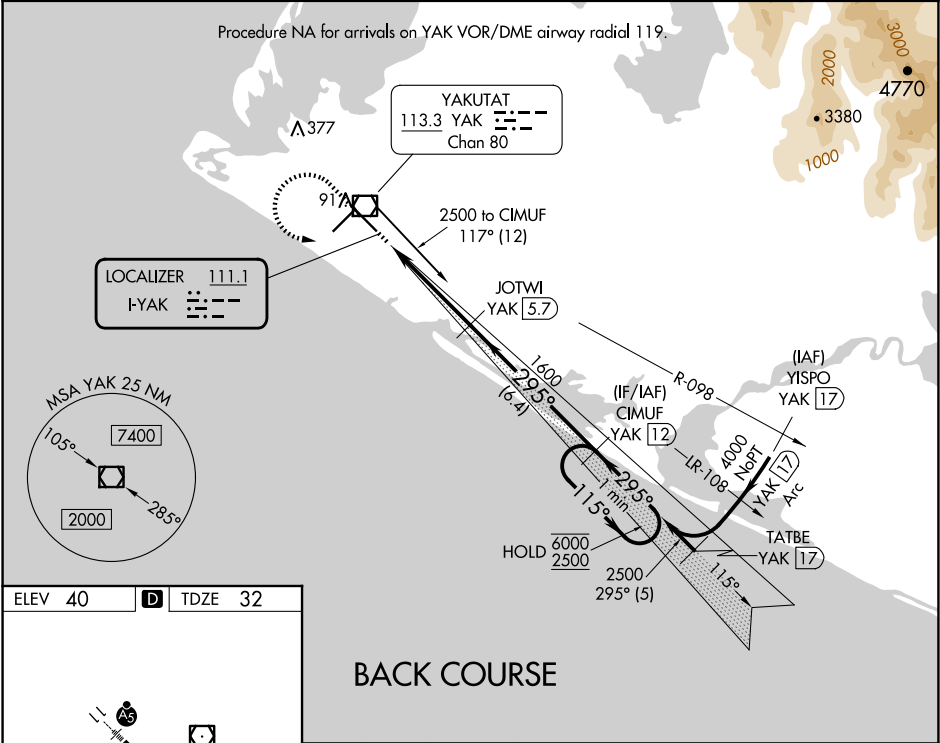


LOC I-YAK 111.1	APP CRS 295°	Rwy Ldg 7732 TDZE 32 Apt Elev 40
---------------------------	------------------------	---

LOC BC RWY 29
YAKUTAT (YAK) (PAYA)

DME required. ▼ Circling Rwy 20 NA at night. Rwy 29 helicopter visibility reduction below ¾ SM NA. Inop table does not apply to S-LOC 29 Cats A and B. When Yakutat altimeter setting not received, procedure NA. For inop ALS, increase S-LOC 29 Cats C and D visibility to 1 ¾ SM. DME from YAK VOR/DME. DME use requires simultaneous reception of I-YAK and YAK DME.	MALSR 45	MISSED APPROACH: Climb to 2000 then climbing left turn to 2500 on YAK VOR/DME R-117 to CIMUF/ YAK 12 DME and hold.
---	-------------	--

ASOS 135.75	ANCHORAGE CENTER 119.0 263.1	JUNEAU RADIO 123.6 (CTAF) 0
-----------------------	--	---------------------------------------



2000	2500	CIMUF YAK 12	CIMUF YAK 12	One Minute Holding Pattern
YAK R-117	YAK 2.3	JOTWI YAK 5.7	YAK 12	115° 6000
	3.00° TCH 52	295°	1600	295° 2500
0.7	0.7	3.3 NM	6.4 NM	
CATEGORY	A	B	C	D
S-LOC 29	540-1	508 (500-1)		
CIRCLING	540-1	500 (500-1)	820-2¼ 780 (800-2¼)	820-2½ 780 (800-2½)