

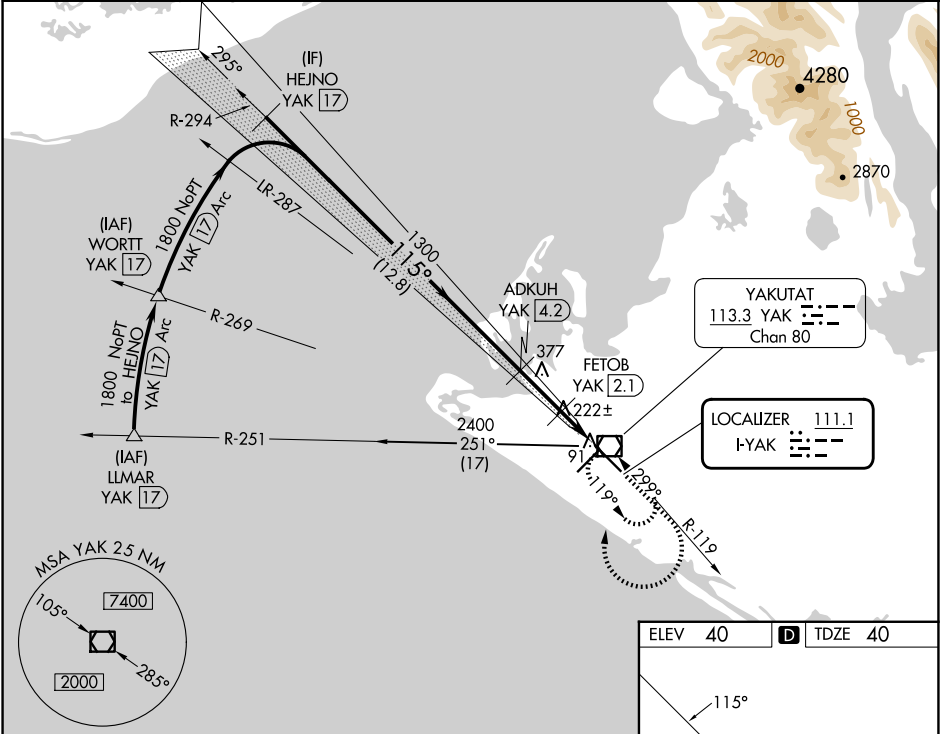
LOC I-YAK	APP CRS	Rwy Ldg	7732
111.1	115°	TDZE	40
		Apt Elev	40

ILS or LOC RWY 11

YAKUTAT (YAK) (PAYA)

DME required.	MALSR	MISSED APPROACH: Climb to 1000 then climbing right turn to 2400 direct YAK VOR/DME and hold, continue climb-in-hold to 2400.
⚠ Circling Rwy 20 NA at night. When Yakutat altimeter setting not received, procedure NA. DME from YAK VOR/DME. DME use requires simultaneous reception of I-YAK and YAK DME.		

ASOS 135.75	ANCHORAGE CENTER 119.0 263.1	JUNEAU RADIO 123.6 (CTAF) 0
----------------	---------------------------------	--------------------------------



HEINO YAK 17	ADKUH YAK 4.2	FETOB YAK 2.1	YAK 1.6	1000	2400	YAK
1800	1300	640				
GS 3.00° TCH 53						
	12.8 NM	2.1 NM	0.5	1.2 NM		
CATEGORY	A	B	C	D		
S-ILS 11	240/24 200 (200-½)					
S-LOC 11	480/24	440 (500-½)	480/40	440 (500-¾)		
CIRCLING	520-1 480 (500-1)	540-1 500 (500-1)	820-2¼ 780 (800-2¼)	820-2½ 780 (800-2½)		

