
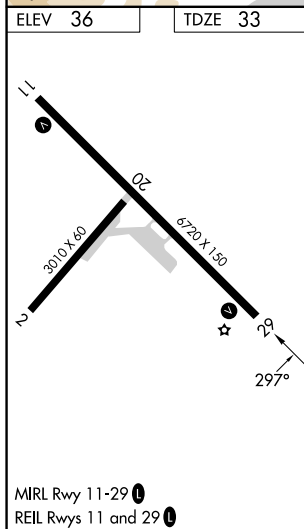
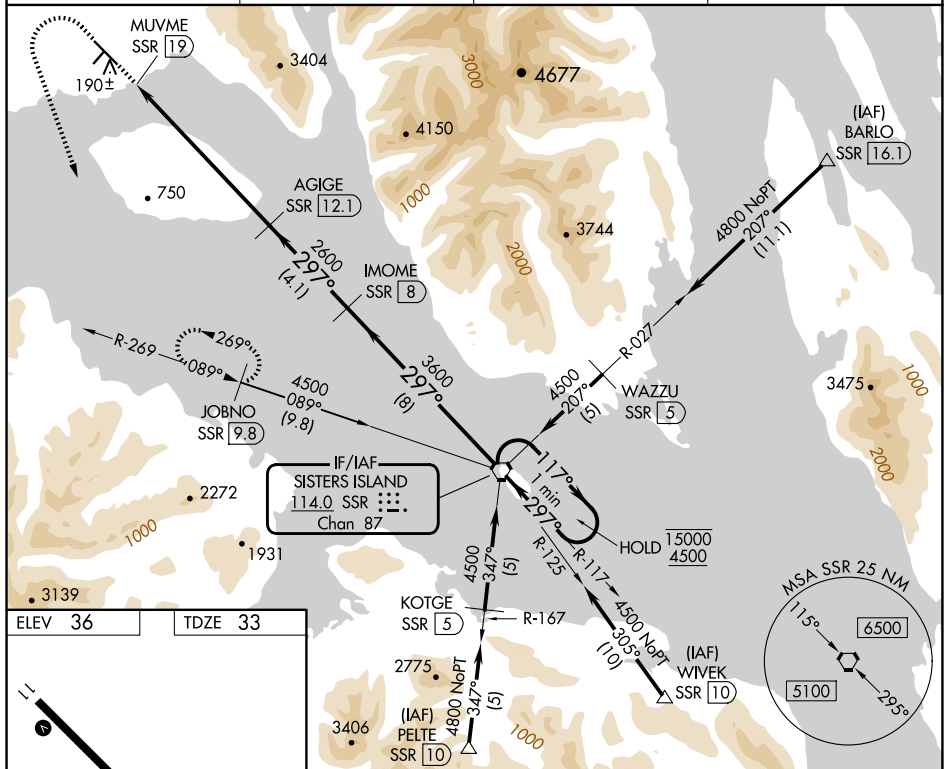


VOR RWY 29  
GUSTAVUS (GST)(PAGS)

 Circling NA northeast of Rwy 11-29. Rwy 29 helicopter visibility reduction below 1 SM NA. Straight-in Rwy 29 NA at night, Circling Rwy 2, 20, 29 NA at night. When local altimeter setting not received, use HNH/PAOH altimeter setting and increase all MDAs 60 feet.

**MISSED APPROACH:** Climb to 2100 then climbing left turn to 5200 on heading 140° and SSR VORTAC R-269 to JOBNO/9.8 DME and hold, continue climb-in-hold to 5200.

AWOS-3P <b>125.9</b>	ANCHORAGE CENTER <b>133.2 360.65</b>	JUNEAU RADIO <b>122.65</b>	CTAF <b>122.5</b>
-------------------------	---	-------------------------------	----------------------



2100 ↑	5200 hdg 140°	SSR R-269	JOBNO SSR 9.8	IMOME SSR 8	SSR VORTAC	One Minute Holding Pattern
CATEGORY	A	B	C	D		
S-29	1300-1¼ 1267 (1300-1¼)	1300-1½ 1267 (1300-1½)	1300-3	1267 (1300-3)		
CIRCLING	1300-1¼ 1264 (1300-1¼)	1300-1½ 1264 (1300-1½)	1300-3	1264 (1300-3)		

AK. 07 AUG 2025 to 02 OCT 2025