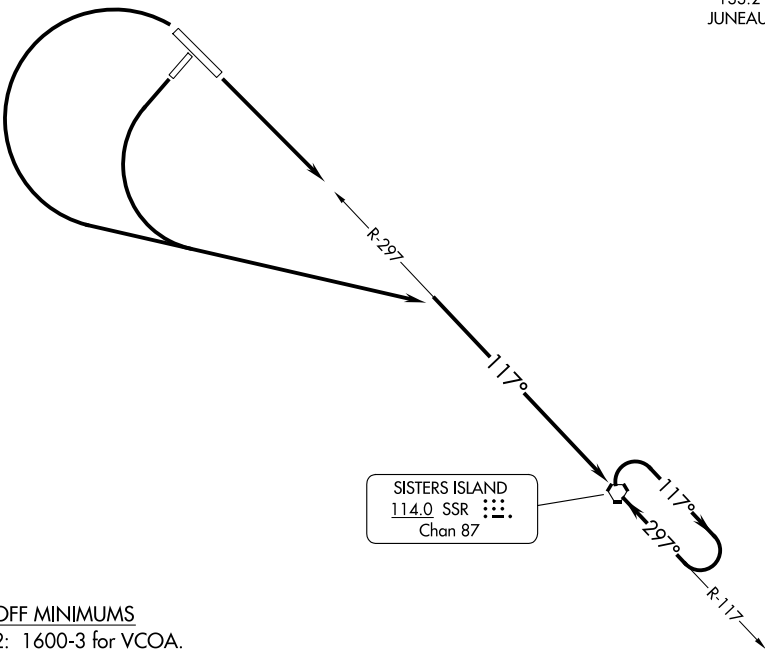


ANCHORAGE CENTER
133.2 360.65
JUNEAU RADIO
122.65



TAKEOFF MINIMUMS

- Rwy 2: 1600-3 for VCOA.
- Rwy 11: Standard with minimum climb of 230' per NM to 1000 or 1600-3 for VCOA.
- Rwy 20: Standard with minimum climb of 215' per NM to 1100 or 1600-3 for VCOA.
- Rwy 29: 300-1 $\frac{3}{4}$ or standard with minimum climb of 270' per NM to 300 or 1600-3 for VCOA.

(CONTINUED ON FOLLOWING PAGE)

NOTE: Chart not to scale.

DEPARTURE ROUTE DESCRIPTION

- TAKEOFF RUNWAY 2: VCOA.
 - TAKEOFF RUNWAY 11: Climb to at or above 4000 to intercept SSR R-297 to SSR VORTAC.
 - TAKEOFF RUNWAY 20: Climbing left turn to at or above 4000 to intercept SSR R-297 to SSR VORTAC.
 - TAKEOFF RUNWAY 29: Climbing left turn to at or above 4000 to intercept SSR R-297 to SSR VORTAC.
- VCOA ALL RUNWAYS: Obtain ATC approval for VCOA when requesting IFR clearance. Climb in visual conditions to cross GUSTAVUS airport southeast bound at or above 1 500, continue climb to at or above 4000 on SSR R-297 to SSR VORTAC.