

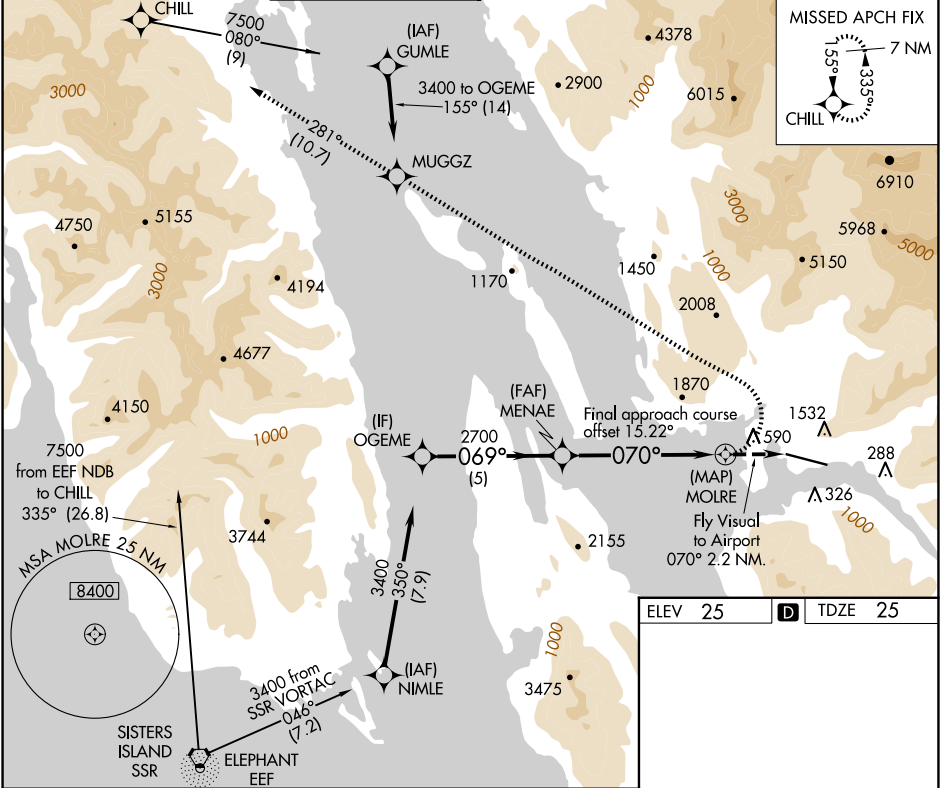
APP CRS	Rwy Ldg	8457
070°	TDZE	25
	Apt Elev	25

RNAV (GPS) V RWY 8

JUNEAU INTL (JNU)(PAJN)

RNP APCH - GPS.		MALSF		MISSED APPROACH: Climbing left turn to 9000 direct MUGGZ and on 281° track to CHILL and hold, continue climb-in-hold to 9000. * Missed approach requires minimum climb of 363 feet per NM to 3200.
	Circling NA at night. Rwy 8 helicopter visibility reduction below 1 SM NA. When Juneau altimeter setting not received, procedure NA.			
	When VGSI inop, procedure NA at night. Lead-in lights not aligned with final approach course. For inop Lead-in lights, increase visibility to 4 SM. Circling NA north of Rwy 8-26.			

ATIS	ANCHORAGE CENTER	JUNEAU TOWER*	GND CON	CLNC DEL	JUNEAU RADIO	UNICOM
135.2	133.9	118.7 (CTAF) 0 278.3	121.9	121.9	122.2	122.95



OGEME VGSI and descent angles not coincident (VGSI Angle 3.50/TCH 38).		9000	MUGGZ	CHILL
3400 069°			tr 281°	
MENAE 2700 070°				
3.08° TCH 50				
MOLE Fly Visual to Airport 070° 2.2 NM.				
5 NM 5.8 NM 2.2 NM				
CATEGORY	A	B	C	D
LNAV MDA*	1880-2	1855 (1900-2)	NA	
LNAV MDA	2340-3	2315 (2400-3)	NA	
CIRCLING	2340-3	2315 (2400-3)	NA	

RLS Rwy 8

REIL Rwy 26 0

HIRL Rwy 8-26 0

AK, 07 AUG 2025 to 02 OCT 2025

AK, 07 AUG 2025 to 02 OCT 2025