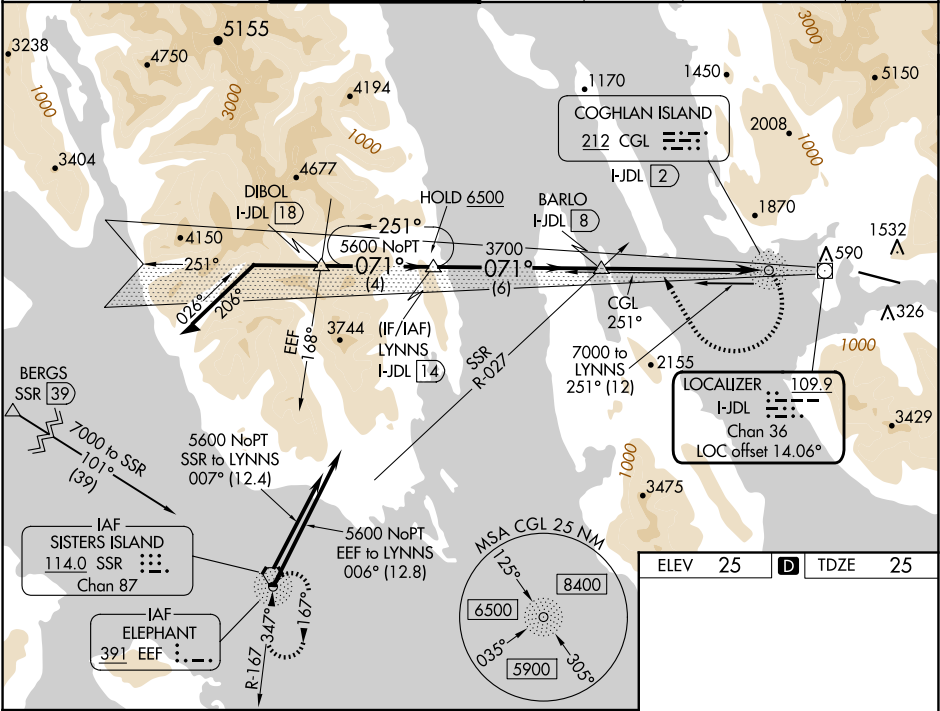


LOC/DME I-JDL	APP CRS	Rwy Ldg	8457
109.9	071°	TDZE	25
Chan 36		Apt Elev	25

LDA X RWY 8
JUNEAU INTL (JNU)(PAJN)

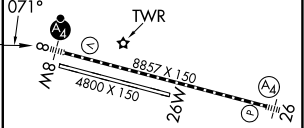
ADF required.	<div>MALSF</div> <div></div>	<div>MISSED APPROACH: Immediate climbing right turn to 5600 on heading 310° and on CGL NDB bearing 251° to intercept SSR VORTAC R-027 direct SSR VORTAC or EEF NDB and hold.</div>
<div></div> <div>1°C</div> <div>Circling to Rwy 26 NA at night. Circling NA north of Rwy 8-26. Rwy 8 helicopter visibility reduction below 1 SM NA. Inop table does not apply. When Juneau altimeter setting not received, procedure NA. CAUTION: Any go-around after passing MAP will not provide standard obstruction clearance. Circling Cat A night visibility minimum 5 SM, Circling Cat B, C, D night visibility minimum 10 SM. Straight-in Rwy 8 at night, operational VGSI required, remain on or above VGSI glidepath until threshold.</div>		

ATIS	ANCHORAGE CENTER	JUNEAU TOWER *	GND CON	CLNC DEL	JUNEAU RADIO	UNICOM
135.2	133.9	118.7 (CTAF) 0 278.3	121.9	121.9	122.2	122.95



ELEV	25	D	TDZE	25
------	----	---	------	----

<div>Remain within 10 NM</div> <div>6300</div> <div>071°</div> <div>6300</div> <div>5600</div> <div>3700</div> <div>Use I-JDL DME when on LDA course.</div> <div>4 NM</div> <div>6 NM</div> <div>6 NM</div> <div>3.2 NM</div>	LYNNS I-JDL (14)		5600	CGL 251°	SSR R-027	EEF
	DIBOL I-JDL (18)		BARLO I-JDL (8)	CGL NDB I-JDL (2)		
CATEGORY	A	B	C	D		
S-LDA 8	3200-4 3175 (3200-4)		NA			
CIRCLING	3200-4 3175 (3200-4)		3340-4 3315 (3400-4)		3700-4 3675 (3700-4)	



RLS Rwy 8	
REIL Rwy 26	
HIRL Rwy 8-26	