

APP CRS

095°

Rwy Ldg

5126

TDZE

10

Apt Elev

10

RNAV (GPS) RWY 9

FERNANDO LUIS RIBAS DOMINICCI (SIG)(TJIG)

RNP APCH

▼

NA

Use Luis Munoz Marin Intl altimeter setting. Circling Rwy 27 NA at night. Rwy 9 helicopter visibility reduction below ¾ SM NA.

ATIS

120.4

SAN JUAN APP CON

119.4 269.2 (WEST & SW) 120.9 290.2 (NORTH & EAST)

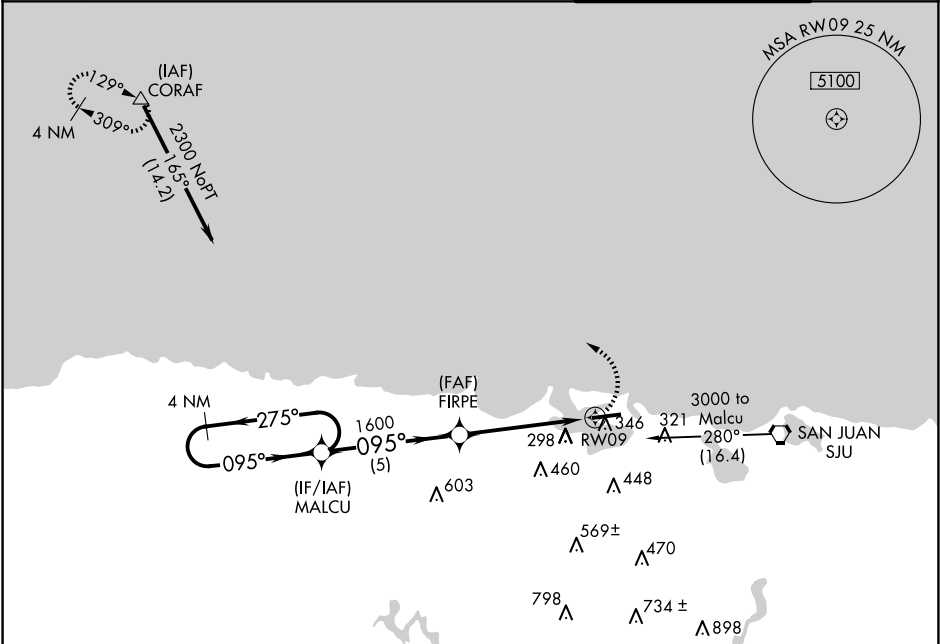
MISSED APPROACH: Climbing left turn to 3000 direct CORAF WP and hold.

ISLA GRANDE TOWER★

135.875 (CTAF) 0 298.85

GND CON

121.7



ELEV 10

D

TDZE 10

4 NM Holding Pattern

2300

←275°

095°→

MALCU

095°

FIRPE

3.00° TCH 30

1600

RW09

5 NM

4.8 NM

CATEGORY	A	B	C	D
LNAV MDA	540-1	530 (600-1)	NA	NA
CIRCLING	660-1	650 (700-1)	NA	NA

REIL Rwys 9 and 27

MIRL Rwy 9-27