

TACAN NIP	APP CRS	Rwy ldg	8003
Chan 19	269°	TDZE	72
(108.2)		Apt Elev	80

TACAN RWY 27L

CECIL (VQQ)

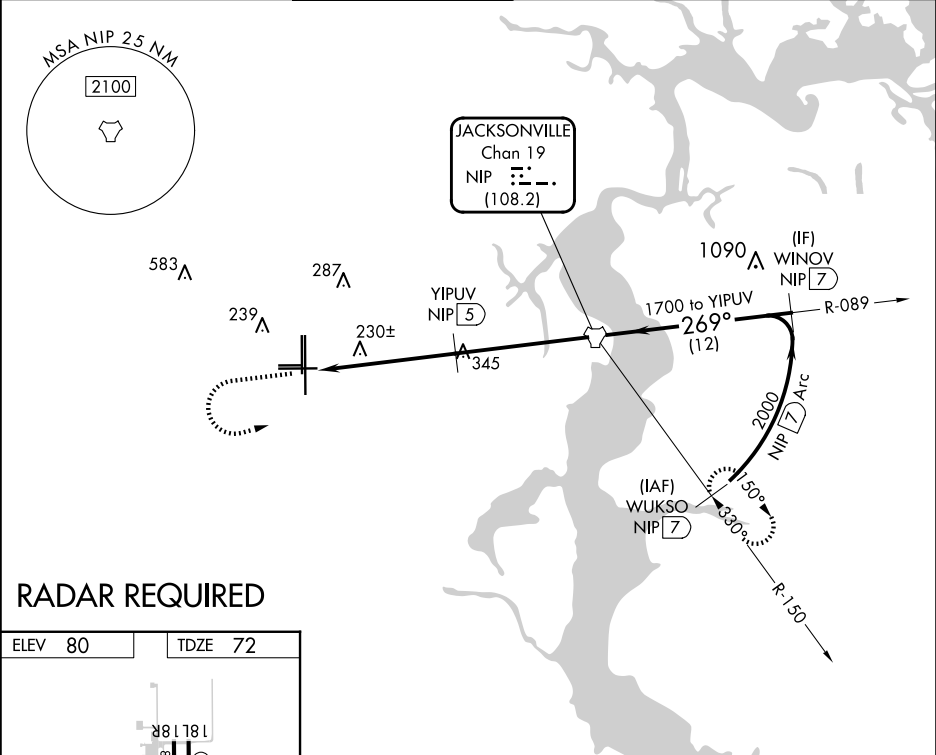
⚠

VDP NA with Jacksonville Intl altimeter setting. Helicopter visibility reduction below ¼ SM NA. When local altimeter setting not received, use Jacksonville Intl altimeter setting and increase all MDA 60 feet, increase S-27L Cats C, D, E visibility ½ mile.

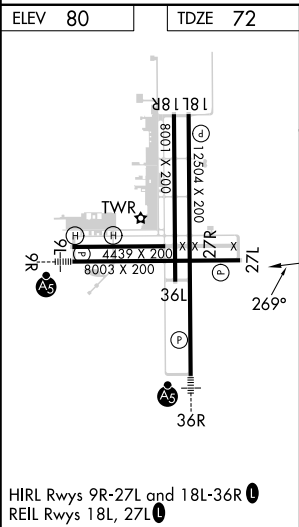
MISSED APPROACH:

Climb to 700 then climbing left turn to 2100 direct NIP TACAN and continue on NIP TACAN R-150 to WUKSO/7 DME and hold.

ATIS	JACKSONVILLE APP CON	CECIL TOWER ★	GND CON	CLNC DEL	GCO
125.275	127.775 377.075	126.1 (CTAF) 235.625	121.625 226.675	123.975 254.25	135.075



RADAR REQUIRED



700	2100	NIP	NIP R-150	WUKSO NIP 7	VGSI and descent angles not coincident (VGSI Angle 3.00/TCH 67).
WINOV NIP 7	YIPUV NIP 5	NIP TACAN	NIP 8.8	NIP 10	269° 2000
1700	1200	1100	1000	900	800
700	600	500	400	300	200
100	50	0	0	0	0
1.2	3.8 NM	5 NM	7 NM		
CATEGORY	A	B	C	D	E
S-27L	540-1	468 (500-1)	540-1½	468 (500-1½)	
CIRCLING	540-1 460 (500-1)	560-1 480 (500-1)	600-1½ 520 (600-1½)	640-2 560 (600-2)	900-3 820 (900-3)