

WAAS CH 82036 W36A	APP CRS 005°	Rwy Idg 12504 TDZE 72 Apt Elev 80
--	------------------------	--

RNAV (GPS) RWY 36R

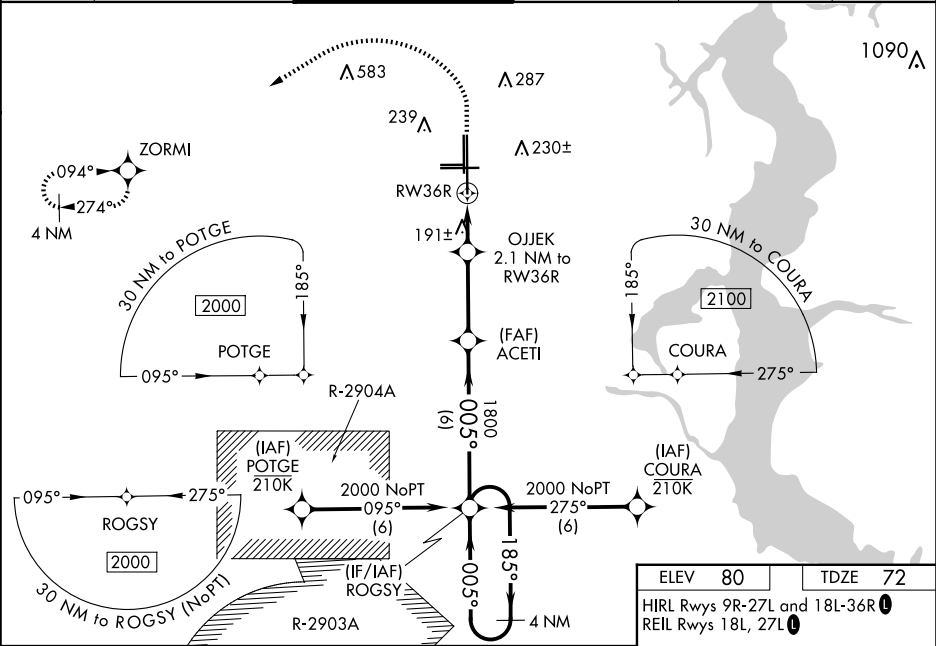
CECIL (VQJ)

Baro-VNAV and VDP NA when using Jacksonville Intl altimeter setting.
For uncompensated Baro-VNAV systems, LNAV/VNAV NA below -15°C (5°F) or above 54°C (130°F). DME/DME RNP-0.3 NA. When local altimeter setting not received, use Jacksonville Intl altimeter setting and increase all DA 52 feet and all MDA 60 feet. Increase LNAV/VNAV all Cats visibility to 1 mile and LNAV Cats C, D visibility to ¾ mile.

MALSR

MISSED APPROACH:
Climb to 1000 then climbing left turn to 2000 direct ZORMI and hold.

ATIS 125.275	JACKSONVILLE APP CON 127.775 377.075	CECIL TOWER ★ 126.1 (CTAF) 0 235.625	GND CON 121.625 226.675	CLNC DEL 123.975 254.25	GCO 135.075
------------------------	--	--	-----------------------------------	-----------------------------------	-----------------------



4 NM Holding Pattern		VGSI and RNAV glidepath not coincident (VGSI Angle 3.00/TCH 66).		1000	2000	ZORMI
2000		1800		*LNAV only.		
GP 3.00° TCH 49		ACETI		*1 NM to RW36R		
185°		005°		RW36R		
6 NM		3.2 NM		1.1 NM		
A		B		C		
LPV DA		272-½		200 (200-½)		
LNAV/VNAV DA		467-¾		395 (400-¾)		
LNAV MDA		460-½		460-⅝ 388 (400-⅝)		
CIRCLING		540-1		640-2		
		460 (500-1)		560 (600-2)		

