

LOC/DME I-VQQ	APP CRS	Rwy Idg	12504
109.5	005°	TDZE	72
Chan 32		Apt Elev	80

ILS or LOC RWY 36R

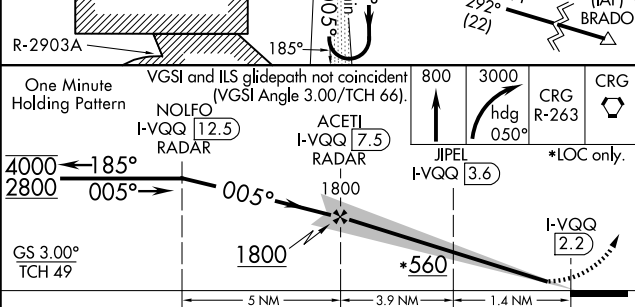
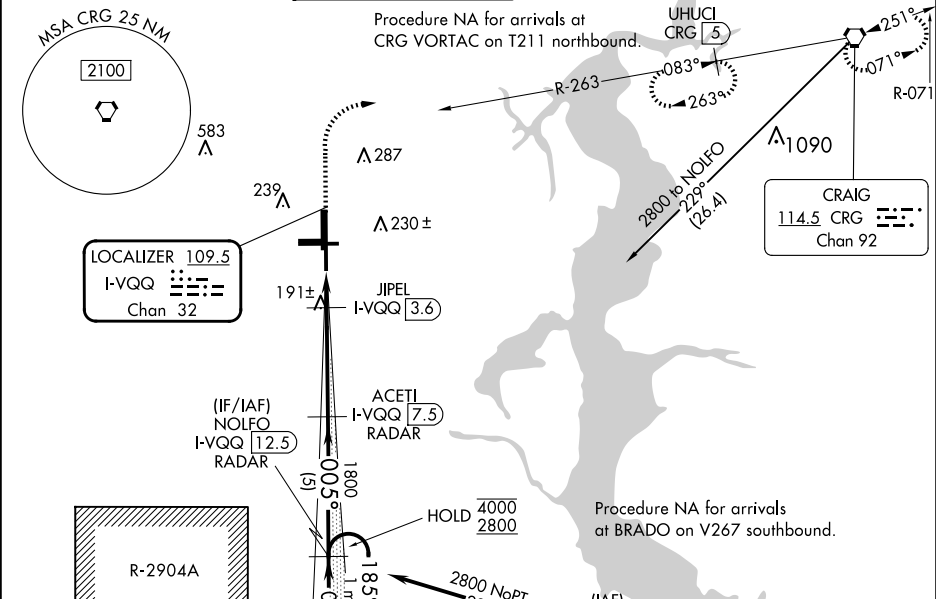
CECIL (VQQ)

From BRADO: RNAV 1-GPS required.
DME or RADAR required for LOC only.

MALSRR
AS

MISSED APPROACH: Climb to 800 then climbing right turn to 3000 on heading 050° and on CRG VORTAC R-263 to CRG VORTAC and hold. (TACAN aircraft climb to 800 then climbing right turn to 3000 on heading 050° and on CRG VORTAC R-263 to UHUCI/CRG 5 DME and hold west, right turn, 083° inbound).

ATIS	JACKSONVILLE APP CON	CECIL TOWER ★	GND CON	CINC DEL	GCO
125.275	127.775 377.075	126.1 (CTAF) 235.625	121.625 226.675	123.975 254.25	135.075



CATEGORY	A	B	C	D	E
S-ILS 36R	272-1½		200 (200-½)		
S-LOC 36R	560-½	488 (500-½)	560-1	488 (500-1)	
CIRCLING	560-1	480 (500-1)	600-1½ 520 (600-½)	640-2 560 (600-2)	900-3 820 (900-3)
JIPEL FIX MINIMUMS (DME REQUIRED)					
S-LOC 36R	460-½	388 (400-½)	460-¾	388 (400-¾)	
CIRCLING	540-1 460 (500-1)	560-1 480 (500-1)	600-1½ 520 (600-½)	640-2 560 (600-2)	900-3 820 (900-3)

