

TACAN FOK Chan 47 (111.0)	APP CRS 230°	Rwy Idg TDZE 66 Apt Elev 66
--	------------------------	---

TACAN RWY 24

FRANCIS S GABRESKI (F'OK)

▼

▲

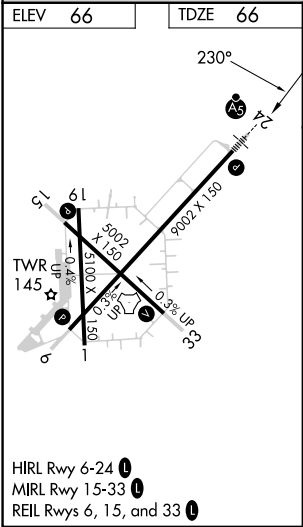
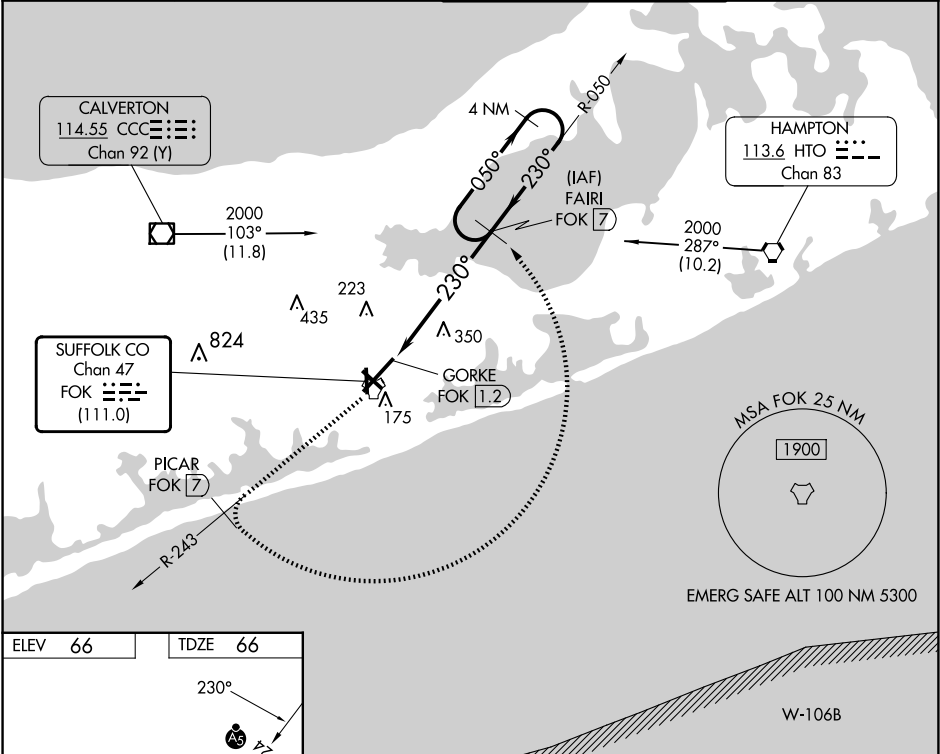
VDP NA with Shirley altimeter setting. When local altimeter setting not received, use Shirley altimeter setting and increase all MDAs 40 feet and S-24 Cat C/D visibility ½ SM and Circling Cat C visibility ¼ SM. Circling Rwy 15 NA at night.

MALSR

AS

MISSED APPROACH: Climb to 2000 on FOK TACAN R-243 to PICAR/7 DME then arc CCW to FAIRI/7 DME and hold.

ASOS 119,925	NEW YORK APP CON 125.975 343.65	SUFFOLK COUNTY TOWER ★ 125.3 (CTAF) 0 236.6	GND CON 121.8 225.4
------------------------	---	---	-------------------------------



2000 ↑ FOK R-243	PICAR FOK [7]	Arc CCW	FAIRI FOK [7]	VGSI and descent angles not coincident (VGSI Angle 3.00°/TCH 77).
FAIRI FOK [7]				4 NM Holding Pattern
FOK TACAN GORKE FOK [1.2]				
FOK [2.8]				
1.6 NM 4.2 NM				
3.06° TCH 55				
CATEGORY	A	B	C	D
S-24	660-½ 594 (600-½)		660-1¼ 594 (600-1¼)	
CIRCLING	660-1 594 (600-1)		700-1¾ 634 (700-1¾)	740-2¼ 674 (700-2¼)

NE-2, 07 AUG 2025 to 04 SEP 2025

NE-2, 07 AUG 2025 to 04 SEP 2025