

| | | |
|---------|----------|------|
| APP CRS | Rwy Ldg | 9002 |
| 055° | TDZE | 57 |
| | Apt Elev | 66 |

RNAV (GPS) RWY 6

FRANCIS S GABRESKI (F'OK)

RNP APCH - GPS.

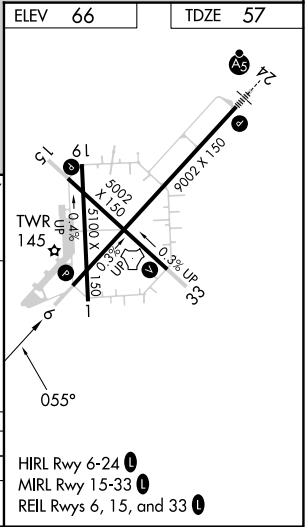
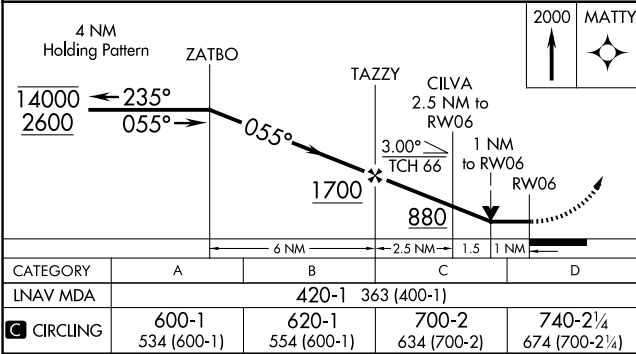
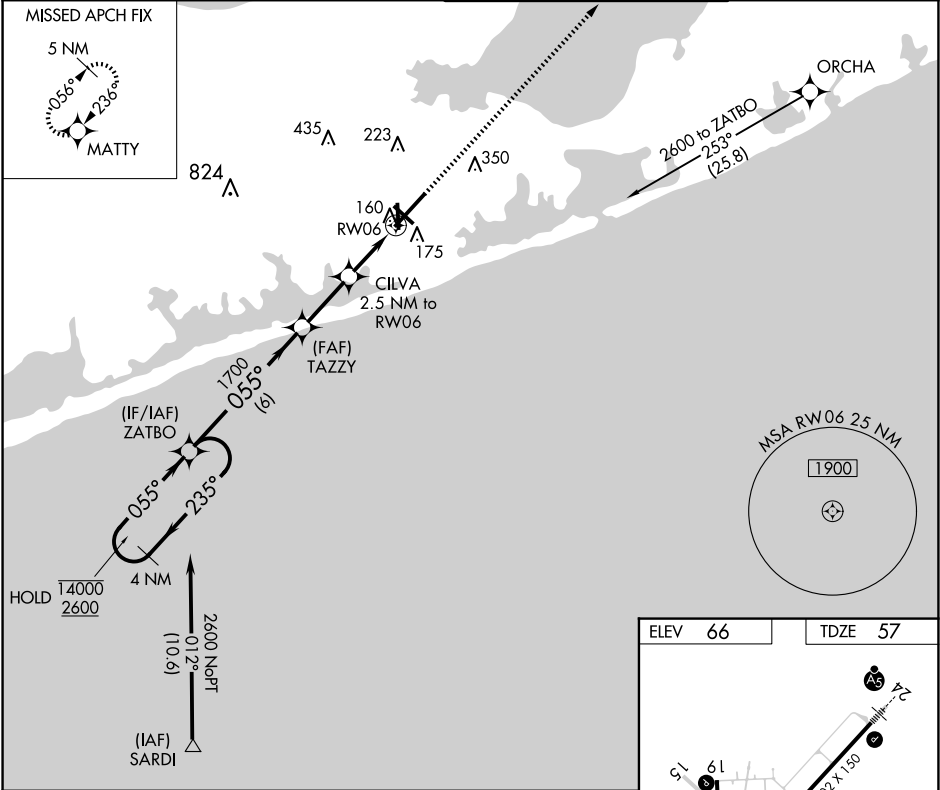
▼

⚠

Rwy 6 helicopter visibility reduction below ¾ SM NA. Circling Rwy 15, 19 NA at night.
When local altimeter setting not received, use HWY altimeter setting increase all MDAs 40 feet and LNAV visibility Cat C/D ½ SM, and Circling visibility Cat C ¼ SM.

MISSED APPROACH:
Climb to 2000 direct MATTY and hold.

| | | | |
|-----------------|------------------------------------|---|------------------------|
| ASOS 119.925 | NEW YORK APP CON 125.975 343.65 | SUFFOLK TOWER ★ 125.3 (CTAF) 0 236.6 | GND CON 121.8 225.4 |
|-----------------|------------------------------------|---|------------------------|



NE-2, 07 AUG 2025 to 04 SEP 2025

NE-2, 07 AUG 2025 to 04 SEP 2025