

LOC/DME I-FOK
111.7
Chan **54**

APP CRS
236°

Rwy Ldg
TDZE **66**
Apt Elev **66**

9002
66
66

ILS or LOC RWY 24

FRANCIS S GABRESKI (F'OK)

RNP APCH - GPS. From ORCHA.
DME required for LOC only.
Rwy 24 helicopter visibility reduction below ¾ SM NA. Circling Rwy 15, 19 NA at night. VDP NA when using HWV altimeter setting. For inop ALS, increase S-ILS 24 all Cats visibility to ¾ SM and S-LOC 24 Cat A/B visibility to 1 SM and Cat C/D visibility to 1¾ SM. When local altimeter setting not received, use HWV altimeter setting and increase S-ILS 24 DA to 374 feet; increase all MDAs 40 feet and Circling visibility Cat C/D ¼ SM.

MALSR
AS

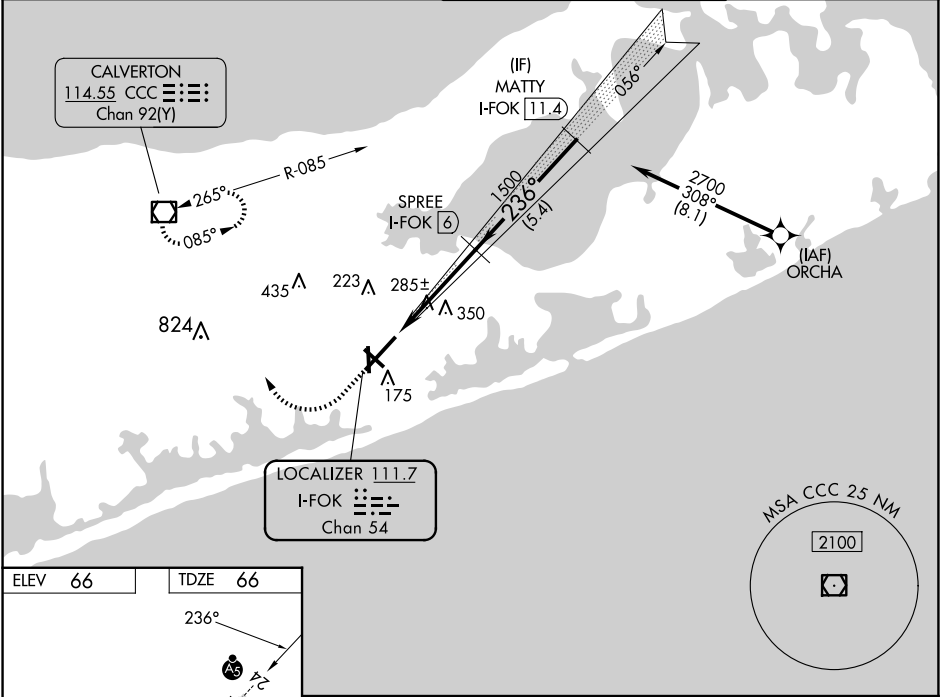
MISSED APPROACH: Climb to 880 then climbing right turn to 2000 direct CCC VOR/DME and hold.

ASOS
119.925

NEW YORK APP CON
125.975 343.65

SUFFOLK TOWER★
125.3 (CTAF) 0 236.6

GND CON
121.8 225.4



ELEV 66

TDZE 66



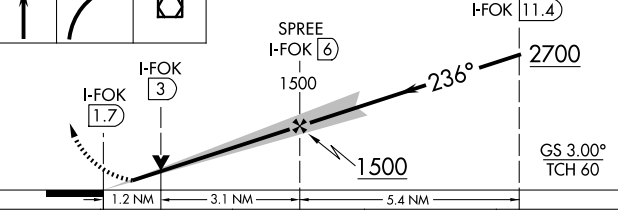

HIRL Rwy 6-24 1

MIRL Rwy 15-33 1

REIL Rwys 6, 15, and 33 1

FAF to MAP 4.3 NM

Knots	60	90	120	150	180
Min:Sec	4:18	2:52	2:09	1:43	1:26

880 ↑		2000 		CCC 		VGSI and ILS glidepath not coincident (VGSI Angle 3.00/TCH 77).			
						MATTY I-FOK 11.4			
						SPREE I-FOK 6		2700	
						I-FOK 3		GS 3.00° TCH 60	
						I-FOK 1.7			
						1500			
						1.2 NM		3.1 NM	
						5.4 NM			
CATEGORY		A		B		C		D	
S-ILS 24				344-¾		278 (300-¾)			
S-LOC 24		540-¾		474 (500-¾)		540-1		474 (500-1)	
 CIRCLING		600-1		620-1		700-1¾		740-2¼	
		534 (600-1)		554 (600-1)		634 (700-1¾)		674 (700-2¼)	

NE-2, 07 AUG 2025 to 04 SEP 2025

NE-2, 07 AUG 2025 to 04 SEP 2025