

WAAS CH 87027 W32A	APP CRS 322°	Rwy Idg 3510 TDZE 545 Apt Elev 556
--	------------------------	---

RNAV (GPS) RWY 32
ORANGE MUNI(ORE)

RNP APCH - GPS.

▼ For uncompensated Baro-VNAV systems, LNAV/VNAV NA below -16°C or above 54°C.
 ▲ Rwy 32 helicopter visibility reduction below ¾ SM. Circling Rwy 1, 19 NA at night.
 Baro-VNAV and VDP NA when using Keene altimeter setting. When local altimeter setting not received, use Keene altimeter setting and increase LPV DA to 928 and all visibilities ½ SM, LNAV/VNAV DA to 1343 and all visibilities ½ SM, and all MDAs 60 feet and LNAV visibility Cat B ½ SM, and Circling visibility Cat B ½ SM.

MISSED APPROACH: Climb to 3500 direct CIGPA and on track 299° to WARIC and hold, continue climb-in-hold to 3500.

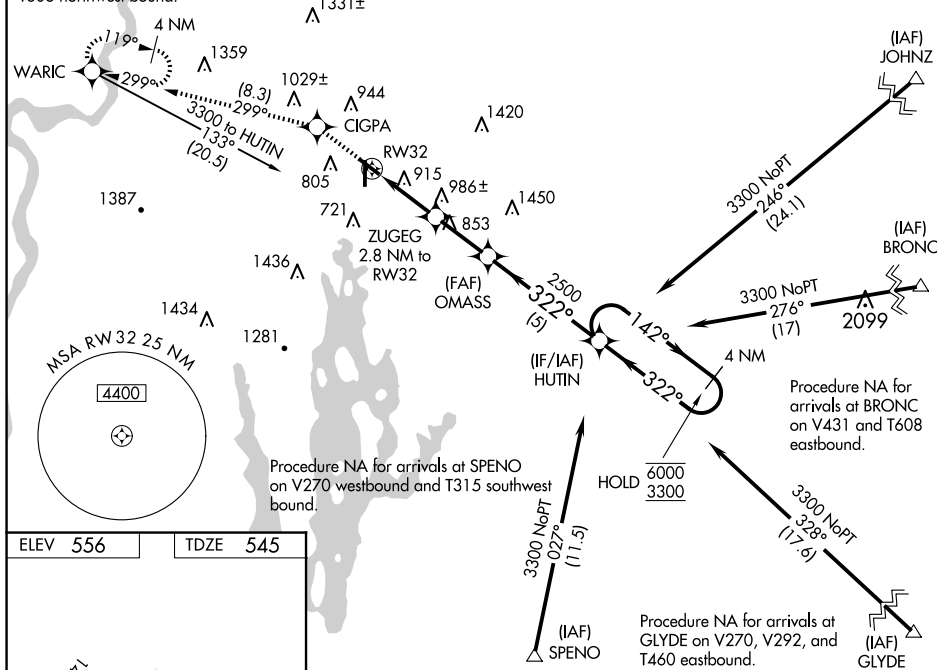
ASOS
135.675

BOSTON CENTER
123.75 338.2

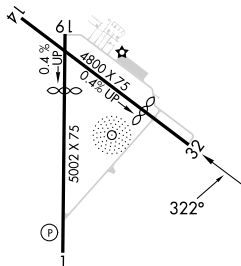
UNICOM
122.8 (CTAF)

Procedure NA for arrivals at WARIC on T295 southwest bound and T608 northwest bound.

Procedure NA for arrivals at
JOHNZ on T314 eastbound.



ELEV	556		TDZE	545
------	-----	--	------	-----



3500 CIGPA tr 299° WARIC

4 NM Holding Pattern

OMASS 2500 HUTIN

ZUGEG 2.8 NM TO RW32

1.7 NM TO RW32

1.1 NM

2.3 NM

5 NM

1600

2500

322°

142°

322°

6000

3300

GP 3.50° TCH 45°

CATEGORY	A	B	C	D
LPV DA	873-1	328 (400-1)		NA
LPNAV/VNAV DA	1288-2	743 (800-2)		NA
LPNAV MDA	1240-1	695 (700-1)		NA
CIRCLING	1260-1 704 (800-1)	1320-1 764 (800-1)		NA