

WAAS CH <b>45509</b> <b>W19A</b>	APP CRS <b>184°</b>	Rwy Idg TDZE <b>140</b> Apt Elev <b>141</b>	<b>5992</b>
--	------------------------	---	-------------

RNAV (GPS) RWY 19

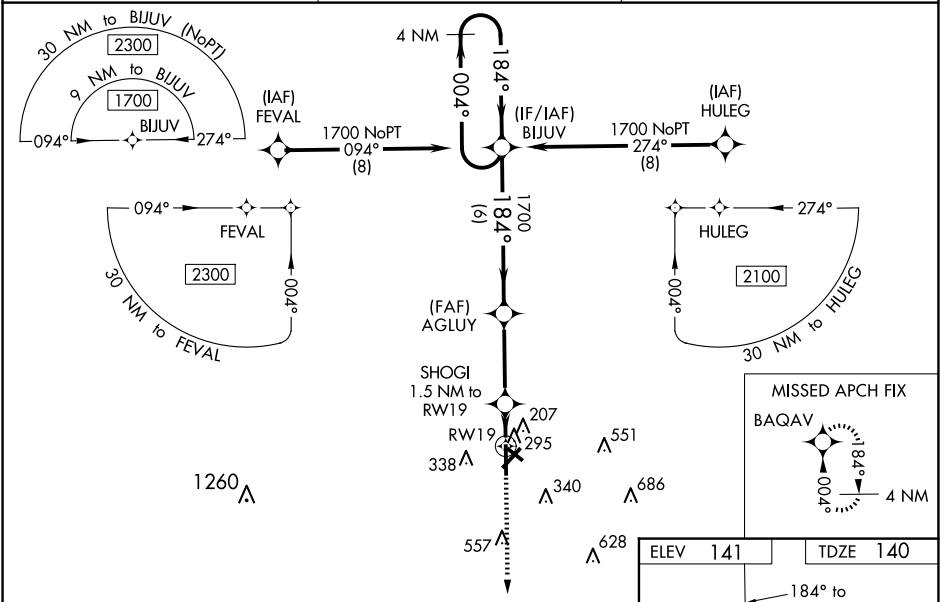
WAYCROSS-WARE COUNTY (AYS)

**⚠** DME/DME RNP-0.3 NA. Baro-VNAV NA when using Alma altimeter setting. When local altimeter setting not received, use Alma altimeter setting: increase LPV DA to 390 feet and LNAV/VNAV DA to 600 feet and all MDA 60 feet; increase LNAV/VNAV visibility all Cats and LNAV Cat C/D visibility ¼ mile; increase Circling Cat C/D visibility ¼ mile. For inop MALSR, increase LNAV Cat C/D visibility to 1½ mile. For inop MALSR when using Alma altimeter setting increase LNAV/VNAV visibility all Cats to 1½ mile, and LNAV Cat C/D visibility to 1½ mile. For uncompensated Baro-VNAV systems, LNAV/VNAV NA below -15°C (5°F) or above 54°C (130°F). Night landing Rwy 5, 31 NA.



MISSED APPROACH:  
Climb to 1800 direct  
BAQAV and hold.

AWOS-3 <b>118.575</b>	JACKSONVILLE CENTER <b>127.575 269.025</b>	UNICOM <b>122.8 (CTAF) 0</b>
--------------------------	---	---------------------------------



4 NM Holding Pattern		VGSI and RNAV glidepath not coincident (VGSI Angle 3.00/TCH 45).		1800	BAQAV
1700 ← 004°		1700 → 184°		↑	✧
GP 3.00°		*660		*RNAV only.	
TCH 51		6 NM		3.2 NM	
CATEGORY		A		B	
LPV DA		340-1½		200 (200-½)	
LNAV/VNAV DA		550-7⁄8		410 (500-7⁄8)	
LNAV MDA		560-1½		560-3⁄4	
CIRCLING		660-1		860-2	
		519 (600-1)		719 (800-2)	

