

| | | |
|---------------------------|------------------------|---|
| LOC I-AYS 108.3 | APP CRS 184° | Rwy Ldg 5992 TDZE 140 Apt Elev 141 |
|---------------------------|------------------------|---|

ILS Z or LOC Z RWY 19

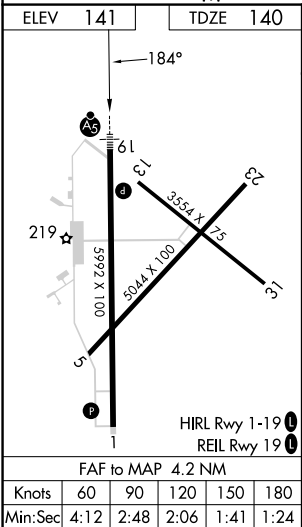
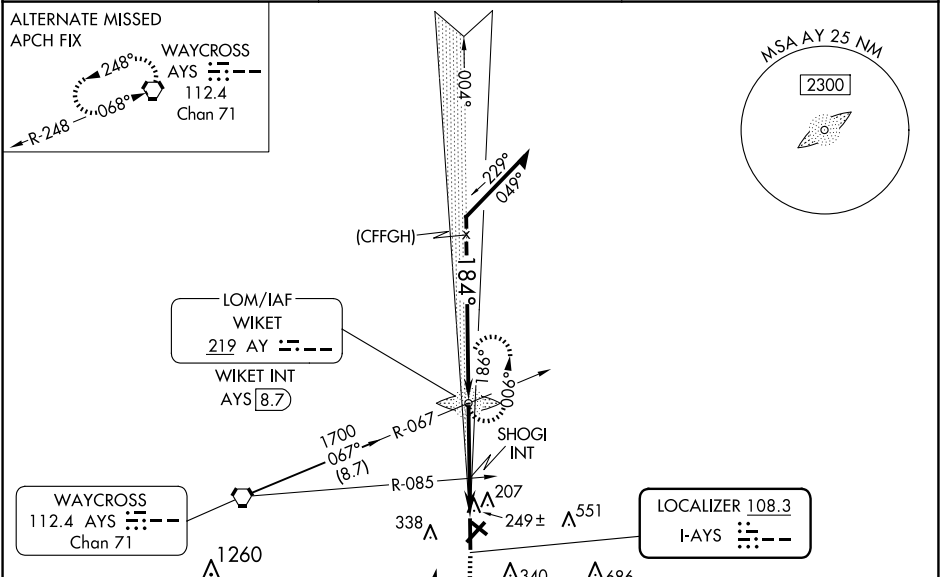
WAYCROSS-WARE COUNTY (AYS)

▼ ADF Required. When local altimeter setting not received, use Alma altimeter setting: increase DA to 390 feet and all MDA 60 feet; increase S-LOC 19 Cat C/D visibility ½ mile; increase Circling Cat C/D visibility ¼ mile. For inop MALSRL, increase S-LOC 19 Cat C/D visibility to 1 mile. For inop MALSRL when using Alma altimeter setting, increase S-LOC 19 Cat C/D visibility to 1½ mile. Increase SHOGI Fix Minimums S-LOC 19 Cat C/D visibility to 1½ mile. Night Landing Rwy 5, 31 NA.

MALSRL

MISSED APPROACH: Climb to 800 then climbing right turn to 1700 direct WIKET LOM and hold.

| | | |
|--------------------------|---|-------------------------------|
| AWOS-3 118.575 | JACKSONVILLE CENTER 127.575 269.025 | UNICOM 122.8 (CTAF) |
|--------------------------|---|-------------------------------|



800 1700 AY

| CATEGORY | A | B | C | D |
|--|-------------|-------------|-------------|--------------|
| S-ILS 19 | 340-½ | | 200 (200-½) | |
| S-LOC 19 | 600-½ | 460 (500-½) | 600-¾ | 460 (500-¾) |
| CIRCLING | 660-1 | 720-1 | 860-2 | 860-2¼ |
| | 519 (600-1) | 579 (600-1) | 719 (800-2) | 719 (800-2¼) |
| SHOGI FIX MINIMUMS (DUAL VOR RECEIVERS REQUIRED) | | | | |
| S-LOC 19 | 500-½ | 360 (400-½) | 500-¾ | 360 (400-¾) |
| CIRCLING | 660-1 | 720-1 | 860-2 | 860-2¼ |
| | 519 (600-1) | 579 (600-1) | 719 (800-2) | 719 (800-2¼) |