

LOC I-AYS <u>108.3</u>	APP CRS 184°	Rwy Ldg 5992 TDZE 140 Apt Elev 141
----------------------------------	------------------------	---

ILS Y or LOC Y RWY 19
WAYCROSS-WARE COUNTY (AYS)

T
A

GPS required. When local altimeter setting not received, use Alma altimeter setting: increase DA to 390 feet and all MDA 60 feet; increase S-LOC 19 Cat C/D visibility $\frac{1}{8}$ mile; increase Circling Cat C/D visibility $\frac{1}{4}$ mile. For inop MALSR when using Alma altimeter setting, increase S-LOC 19 Cat C/D visibility to $\frac{1}{8}$ mile. Night landing Rwy 5, 31 NA.

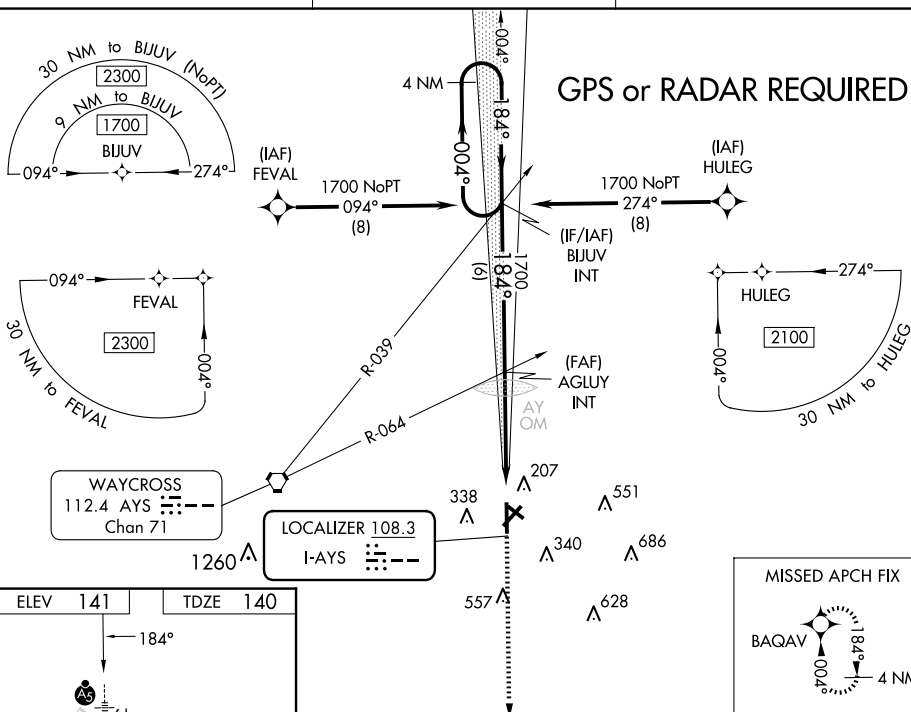
MALSR



MISSED APPROACH:
Climb to 1800 direct
BAQAV and hold.

AWOS-3
118.575

JACKSONVILLE CENTER
127.575 269.025

UNICOM
122.8 (CTAF) **L**

FAF to MAP 4.7 NM	
Knots	60 90 120 150 180
Min:Sec	4:42 3:08 2:21 1:53 1:34

Diagram illustrating the RW19 instrument landing system (ILS) and visual glide slope indicator (VGSI) setup. The diagram shows the RW19 runway, the ILS station (AGLUV) at 1700 feet, and the VGSI station (BIJUV) at 1700 feet. The VGSI and ILS glidepaths are not coincident, with a VGSI angle of 3.00 degrees/TCH 51. The diagram also shows the 4 NM Holding Pattern and the 004° and 184° headings. The diagram includes a scale bar for 1800, 1700, and 1600 feet, and a compass rose showing the heading of 004° and 184°.

CATEGORY	A	B	C	D
S-ILS 19	340-½		200 (200-½)	
S-LOC 19	600-½	460 (500-½)	600-⅞	460 (500-⅞)
C CIRCLING	660-1 519 (600-1)	720-1 579 (600-1)	860-2 719 (800-2)	860-2¼ 719 (800-2¼)