

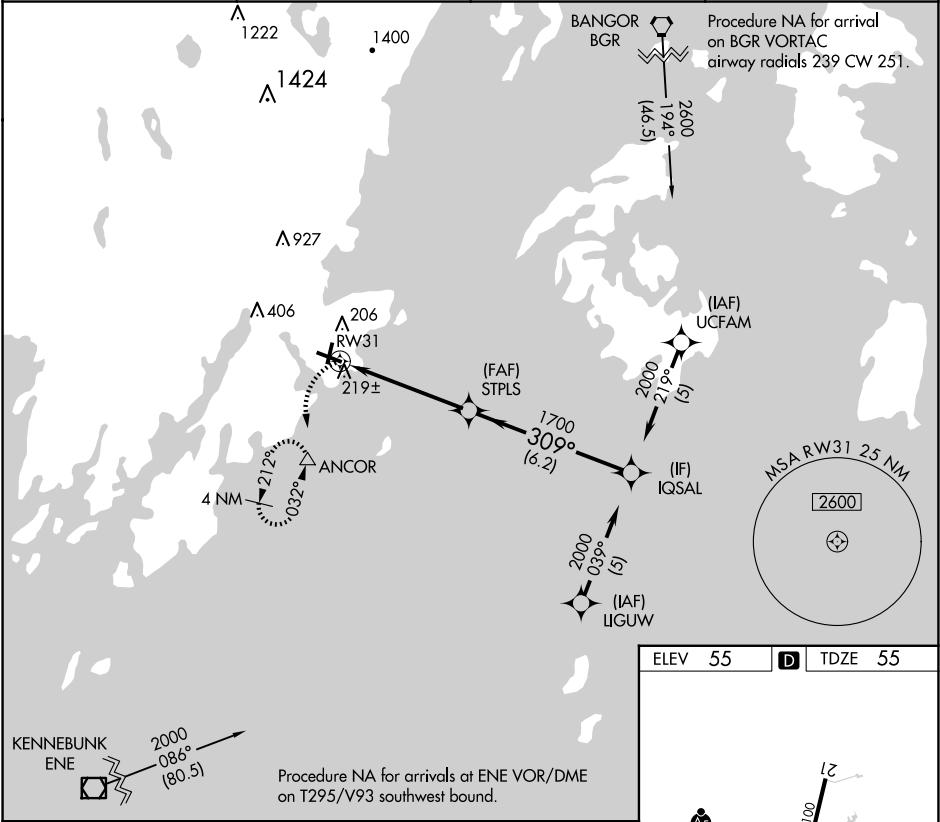
APP CRS	Rwy Idg	5412
309°	TDZE	55
	Apt Elev	55

RNAV (GPS) RWY 31
KNOX COUNTY RGNL (RKD)

RNP APCH.
<div><div></div><div></div></div> Rwy 31 helicopter visibility reduction below ¾ SM NA.

MISSED APPROACH: Climbing left turn to 2000 direct ANCOR and hold, continue climb-in-hold to 2000.

AWOS-3PT 119.025	PORTLAND APP CON ★ 120.4 299.2	CLNC DEL 123.8	UNICOM 123.05 (CTAF) 0
---------------------	-----------------------------------	-------------------	---------------------------



2000

ANCOR

Visual Segment - Obstacles.

IGSAL

2000

STPLS

RW31

CATEGORY	A	B	C	D
LNAV MDA	480-1	425 (500-1)	480-1¼	425 (500-1¼)
C CIRCLING	580-1	525 (600-1)	720-1¾ 665 (700-1¾)	1140-3 1085 (1100-3)

