

WAAS CH <b>40210</b> <b>W03A</b>	APP CRS <b>031°</b>	Rwy Idg TDZE Apt Elev	<b>4000</b> <b>54</b> <b>55</b>
--	------------------------	-----------------------------	---------------------------------------

RNAV (GPS) RWY 3

KNOX COUNTY RGNL (R.KD)

RNP APCH.

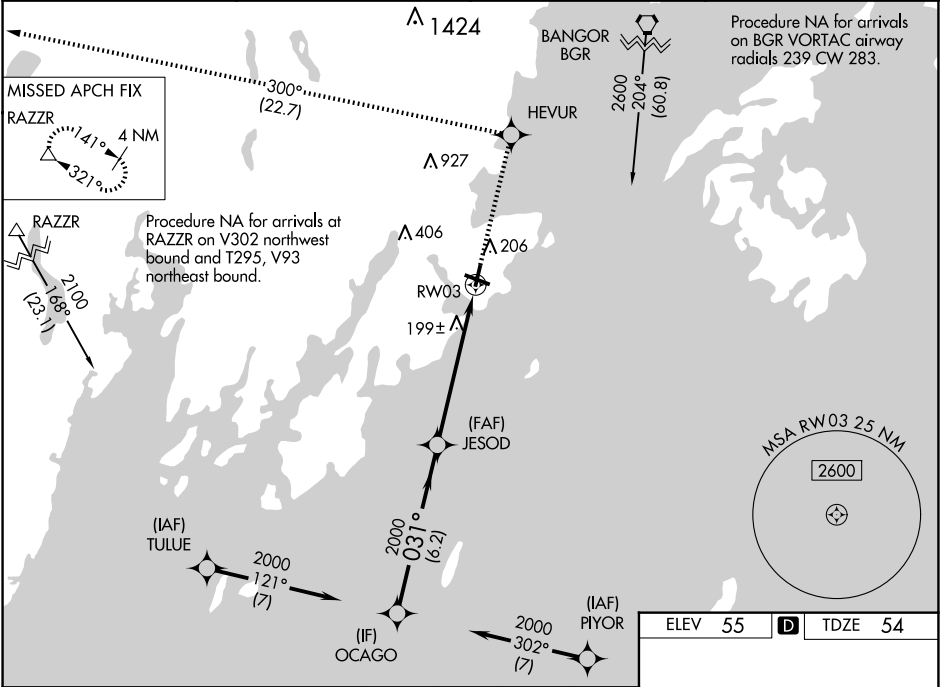
▼

▲

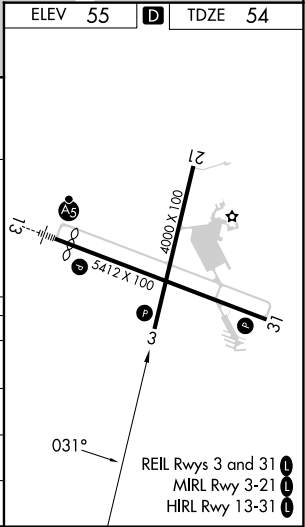
Rwy 3 helicopter visibility reduction below ¾ SM NA.  
For uncompensated Baro-VNAV systems,  
LNAV/VNAV NA below -15°C or above 54°C.

MISSED APPROACH: Climb to 3000 direct HEVUR and on track 300° to RAZZR and hold.

AWOS-3PT <b>119.025</b>	PORTLAND APP CON ★ <b>120.4 299.2</b>	CLNC DEL <b>123.8</b>	UNICOM <b>123.05</b> (CTAF) <b>0</b>
----------------------------	--	--------------------------	---



VGSI and RNAV glidepath not coincident (VGSI Angle 3.00/TCH 34).				
OCAGO		JESOD		RAZZR
2000		2000		tr 300°
GP 3.00° TCH 40		*1.5 NM to RW03		*LNAV only.
6.2 NM		4.4 NM		1.5 NM
CATEGORY	A	B	C	D
LPV DA	374-1¼ 320 (400-1¼)			
LNAV/VNAV DA	459-1½ 405 (500-1½)			
LNAV MDA	560-1 506 (600-1)	560-1½ 506 (600-1½)	560-1½ 506 (600-1½)	560-1½ 506 (600-1½)
CIRCLING	600-1 545 (600-1)	720-1¾ 665 (700-1¾)	1140-3 1085 (1100-3)	1140-3 1085 (1100-3)



NE-1, 07 AUG 2025 to 04 SEP 2025

NE-1, 07 AUG 2025 to 04 SEP 2025