

WAAS CH 48940 W13A	APP CRS 129°	Rwy Idg TDZE Apt Elev	5012 54 55
--	------------------------	-----------------------------	---------------------------------------

RNAV (GPS) RWY 13

KNOX COUNTY RGNL (RKD)

▼

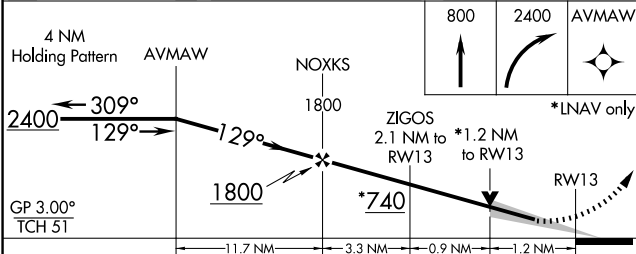
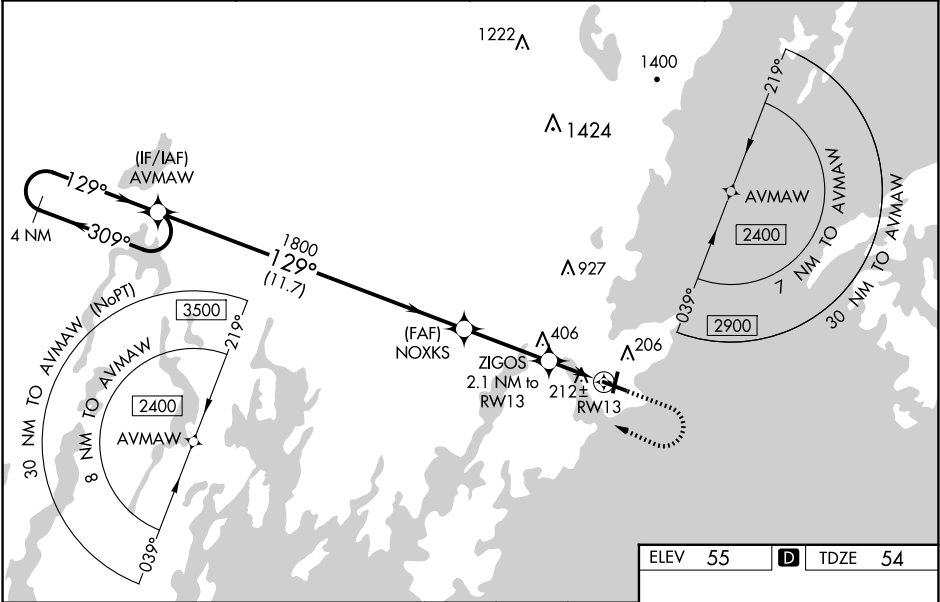
▲

DME/DME RNP -0.3 NA. VDP and Baro-VNAV NA when using Wiscasset altimeter setting. When local altimeter setting not received, use Wiscasset altimeter setting and increase LPV DA to 319 feet, LNAV/VNAV DA to 467 feet and all MDA 80 feet. Increase LNAV/VNAV visibility all Cats to 1 SM, LNAV Cat C/D to 1 SM and Circling Cat C to 2 ¼ SM. For inop ALS increase LNAV/VNAV all Cats visibility to 1 ½ SM. For inop ALS when using Wiscasset altimeter setting increase LPV all Cats visibility to ¾ SM, LNAV/VNAV all Cats visibility to 1 ¾ SM and LNAV Cat C/D to 1 ¾ SM. For uncompensated Baro-VNAV systems, LNAV/VNAV NA below -15°C (5°F) or above 54°C (130°F).

MALSRL

MISSED APPROACH:
Climb to 800 then
climbing right turn to
2400 direct AVMAW
and hold.

AWOS-3PT 119.025	PORTLAND APP CON ★ 120.4 299.2	CLNC DEL 123.8	UNICOM 123.05 (CTAF) 0
----------------------------	--	--------------------------	----------------------------------



ELEV 55	TDZE 54
---------	---------

800

2400

AVMAW

GP 3.00°

TCH 51

*LNAV only

REIL Rwy 3 and 31

MIRL Rwy 3-21

HIRL Rwy 13-31